

LOC I-VUJ 110.55	APP CRS 223°	Rwy Ldg TDZE Apt Elev	5499 584 609
----------------------------	------------------------	-----------------------------	---

ILS or LOC RWY 22L

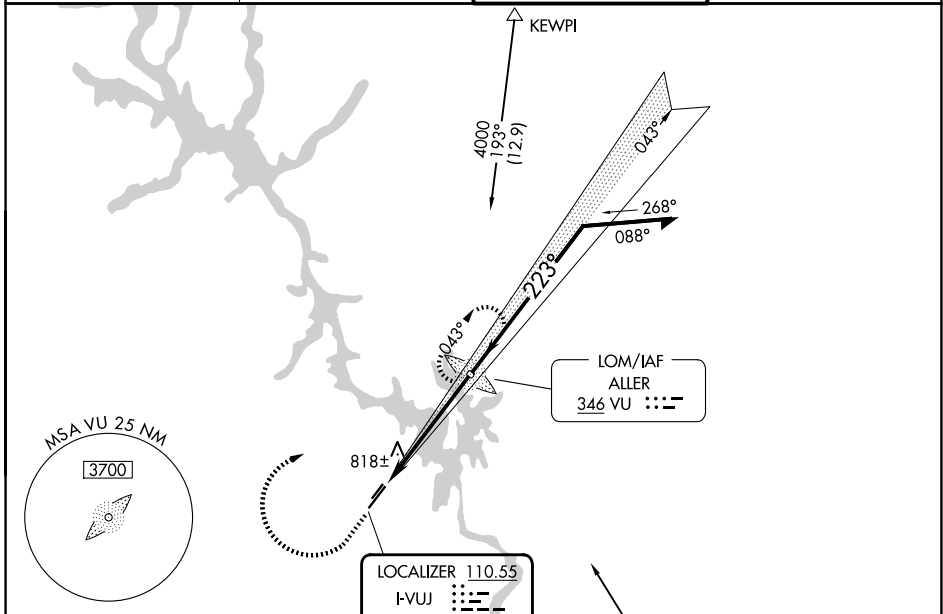
STANLY COUNTY (VUJ)

ADF required.

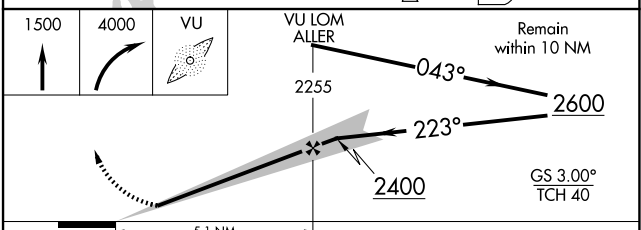
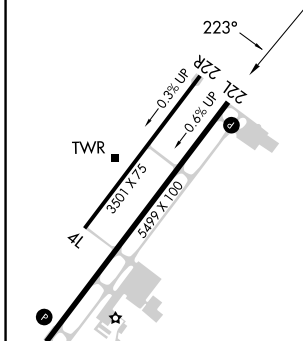
⚠ Circling Rwy 4L, 22R NA at night.
Rwy 22L helicopter visibility reduction below ¾ SM NA.

MISSED APPROACH: Climb to 1500 then climbing right turn to 4000 direct ALLER LOM and hold, continue climb-in-hold to 4000.

AWOS-3 128.175	CHARLOTTE APP CON 128.325 307.8	STANLY COUNTY TOWER★ 126.275 (CTAF) 0 291.9	GND CON 121.75 254.375
--------------------------	---	---	----------------------------------



ELEV 609	TDZE 584
----------	----------



REIL Rwys 4R and 22L	1
MIRL Rwys 4L-22R	1
HIRL Rwys 4R-22L	1
FAF to MAP 5.1 NM	
Knots	60 90 120 150 180
Min:Sec	5:06 3:24 2:33 2:02 1:42
CATEGORY	A B C D
S-ILS 22L	916-1 332 (400-1)
S-LOC 22L	1100-1 516 (500-1) 1100-1 516 (500-1 1/8)
CIRCLING	1260-1 651 (700-1) 1260-1 651 (700-1 3/4) 1380-2 771 (800-2 1/2)

SE-2, 14 MAY 2026 to 11 JUN 2026

SE-2, 14 MAY 2026 to 11 JUN 2026