

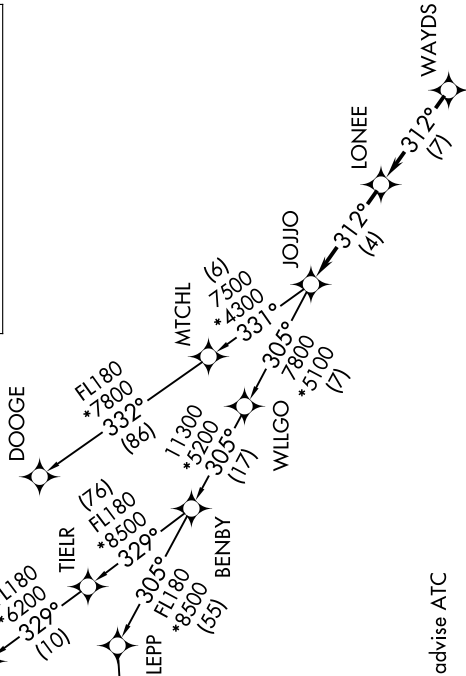
JOJO SIX DEPARTURE (RNAV)

SE-2, 14 MAY 2026 to 11 JUN 2026

CHARLOTTE DEP CON
128.325 307.8
AWOS-3
128.175
CLNC DEL
121.75 254.375
GND CON
121.75 254.375
STANLY COUNTY TOWER*
126.275 (CTAF) 291.9

RNAV 1 - DME/DME/IRU or GPS.
RADAR required.

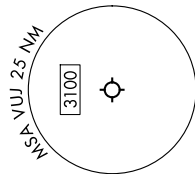
TOP ALTITUDE:
3000



TAKEOFF MINIMUMS

Rwys 4L, 22R: NA - Environmental.
Rwy 22L: Standard.
Rwy 4R: 300-1¼ or standard with
minimum climb of 315'/NM to 1000.

- NOTE: Turbojet only.
- NOTE: If unable to accept climb rates, advise ATC on initial contact.
- NOTE: Transponder code will be issued via PDC or CLT CLNC DEL.
- NOTE: Upon reaching 10000 MSL, accelerate to and maintain 280K, if unable advise ATC.



NOTE: Chart not to scale.

DEPARTURE ROUTE DESCRIPTION

Climb on heading assigned by ATC for RADAR vectors to WAYDS, then on depicted route to JOJJO. Then on assigned transition. Maintain 3000, expect filed altitude 10 minutes after departure.

CUBIM TRANSITION (JOJO6.CUBIM)
DOOGE TRANSITION (JOJO6.DOOGE)
NOONN TRANSITION (JOJO6.NOONN)

SE-2, 14 MAY 2026 to 11 JUN 2026