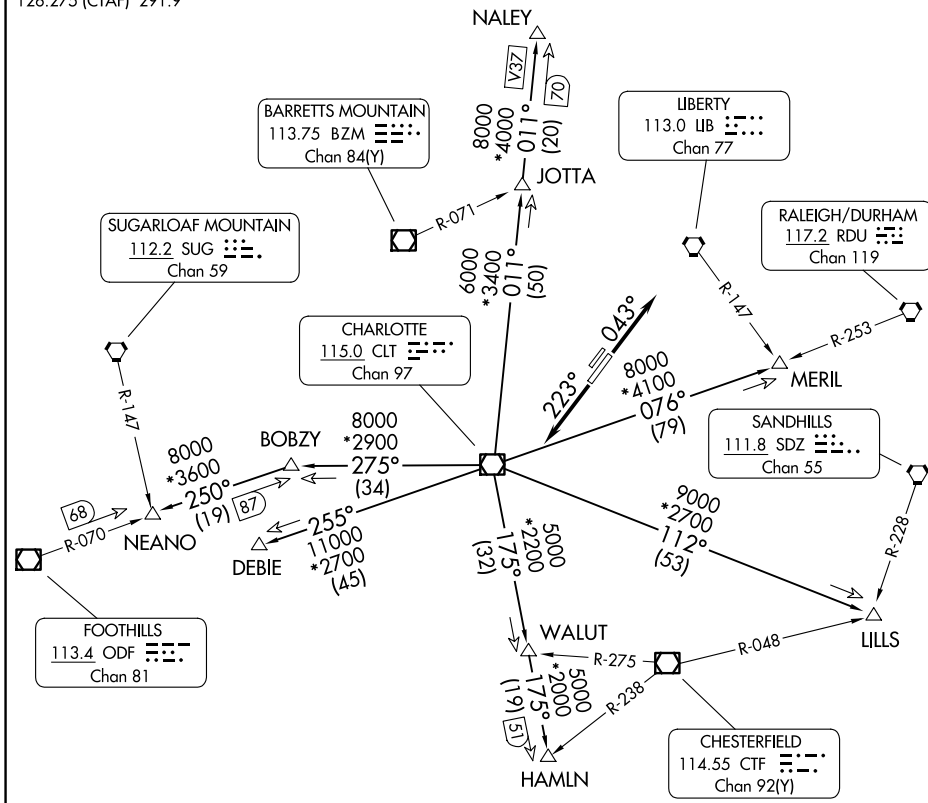


# KERMIT FIVE DEPARTURE

CHARLOTTE DEP CON  
128.325 307.8  
AWOS-3  
128.175  
CLNC DEL  
121.75 254.375  
GND CON  
121.75 254.375  
STANLY COUNTY TOWER\*  
126.275 (CTAF) 291.9

RADAR and DME required.

**TOP ALTITUDE:  
3000**



SE-2, 14 MAY 2026 to 11 JUN 2026

SE-2, 14 MAY 2026 to 11 JUN 2026

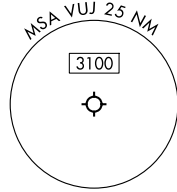
### TAKEOFF MINIMUMS

Rwys 4L, 22R: NA - Environmental.  
 Rwy 22L: Standard.  
 Rwy 4R: 300-1<sup>3</sup>/<sub>4</sub> or standard with minimum climb of 315'/NM to 1000.

NOTE: Turbojets only.  
 NOTE: Upon reaching 10000 MSL, accelerate to and maintain 280K, if unable advise ATC.  
 NOTE: Transponder code will be issued via Charlotte clearance delivery.

NOTE: Chart not to scale.

(CONTINUED ON FOLLOWING PAGE)



# KERMIT FIVE DEPARTURE



## DEPARTURE ROUTE DESCRIPTION

TAKEOFF RUNWAY 4R: Climb on heading 043°, thence. . .

TAKEOFF RUNWAY 22L: Climb on heading 223°, thence. . .

. . .on RADAR vectors to intercept filed/assigned transition or enroute fix/navaid.  
Maintain 3000, expect filed altitude 10 minutes after departure.

DEBIE TRANSITION (KER5.DEBIE): From over CLT VOR/DME on CLT R-255 to DEBIE.

HAMLN TRANSITION (KER5.HAMLN): From over CLT VOR/DME on CLT R-175 to HAMLN.

JOTTA TRANSITION (KER5.JOTTA): From over CLT VOR/DME on CLT R-011 to JOTTA.

LILLS TRANSITION (KER5.LILLS): From over CLT VOR/DME on CLT R-112 to LILLS.

MERIL TRANSITION (KER5.MERIL): From over CLT VOR/DME on CLT R-076 to MERIL.

NALEY TRANSITION (KER5.NALEY): From over CLT VOR/DME on CLT R-011 to NALEY.

NEANO TRANSITION (KER5.NEANO): From over CLT VOR/DME on CLT R-275 to BOBZY,  
then on ODF R-070 to NEANO.

SE-2, 14 MAY 2026 to 11 JUN 2026

SE-2, 14 MAY 2026 to 11 JUN 2026