

# KNIGHTS FOUR DEPARTURE

CHARLOTTE DEP CON  
128.325 307.8  
AWOS-3  
128.175  
CLNC DEL  
121.75 254.375  
GND CON  
121.75 254.375  
STANLEY COUNTY TOWER ★  
126.275 (CTAF) 291.9

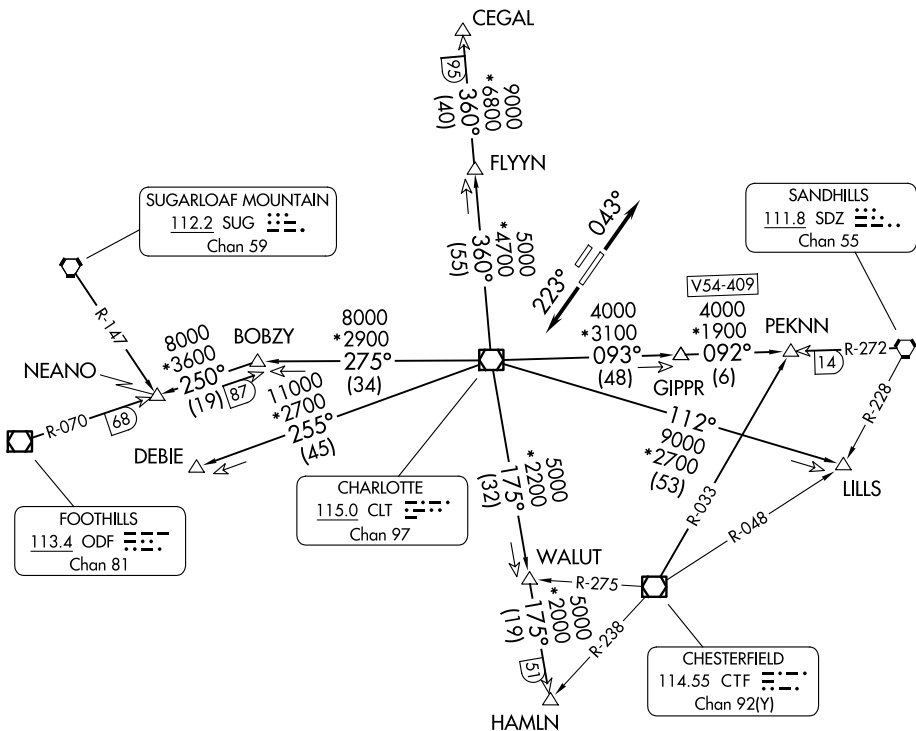
RADAR and DME required.

**TOP ALTITUDE:  
3000**

### TAKEOFF MINIMUMS

Rwys 4L, 22R: NA-Environmental.  
Rwy 22L: Standard.

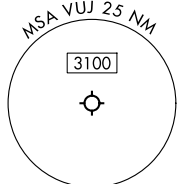
Rwy 4R: 300-1¾ or standard with minimum  
climb of 315'/NM to 1000.



SE-2, 14 MAY 2026 to 11 JUN 2026

SE-2, 14 MAY 2026 to 11 JUN 2026

- NOTE: Props only.
- NOTE: Turboprops: Operate in a manner that will result in best forward speed and climb rate.
- NOTE: Transponder code will be issued via Charlotte clearance delivery.



(CONTINUED ON FOLLOWING PAGE)

NOTE: Chart not to scale.

# KNIGHTS FOUR DEPARTURE

# KNIGHTS FOUR DEPARTURE



## DEPARTURE ROUTE DESCRIPTION

TAKEOFF RUNWAY 4R: Climb on heading 043°, thence. . .

TAKEOFF RUNWAY 22L: Climb on heading 223°, thence. . .

. . . on RADAR vectors to intercept filed/assigned transition or enroute fix/navaid.

Maintain 3000, expect filed altitude/flight level 10 minutes after departure.

CEGAL TRANSITION (KNI4.CEGAL): From over CLT VOR/DME on CLT R-360 to CEGAL.

DEBIE TRANSITION (KNI4.DEBIE): From over CLT VOR/DME on CLT R-255 to DEBIE.

FLYYN TRANSITION (KNI4.FLYYN): From over CLT VOR/DME on CLT R-360 to FLYYN.

HAMLN TRANSITION (KNI4.HAMLN): From over CLT VOR/DME on CLT R-175 to HAMLN.

LILLS TRANSITION (KNI4.LILLS): From over CLT VOR/DME on CLT R-112 to LILLS.

NEANO TRANSITION (KNI4.NEANO): From over CLT VOR/DME on CLT R-275 to BOBZY,  
then on ODF R-070 to NEANO.

PEKNN TRANSITION (KNI4.PEKNN): From over CLT VOR/DME on CLT R-093 to GIPPR,  
then on SDZ R-272 to PEKNN.

SE-2, 14 MAY 2026 to 11 JUN 2026

SE-2, 14 MAY 2026 to 11 JUN 2026