

(KWEEN6.KWEEN) 26134

AL-6707 (FAA)

STANLY COUNTY (VUJ)
ALBEMARLE, NORTH CAROLINA

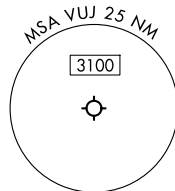
KWEEN SIX DEPARTURE (RNAV)

CHARLOTTE DEP CON
128.325 307.8
AWOS-3
128.175
CLNC DEL
121.75 254.375
GND CON
121.75 254.375
STANLY COUNTY TOWER★
126.275 (CTAF) 291.9

RNAV 1 - DME/DME/IRU or GPS.

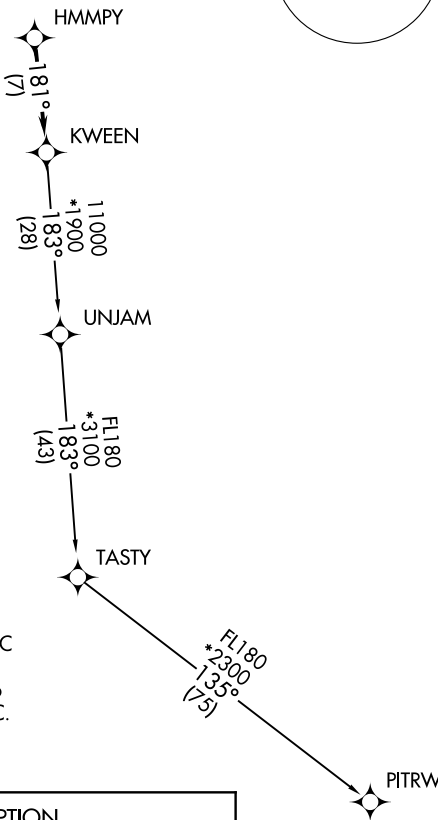
RADAR required.

**TOP ALTITUDE:
3000**



TAKEOFF MINIMUMS

Rwys 4L, 22R: NA - Environmental.
Rwy 22L: Standard.
Rwy 4R: 300-1¾ or standard with
minimum climb of 315'/NM to 1000.



- NOTE: Turbojet only.
- NOTE: Transponder code will be issued via PDC or CLT CLNC DEL.
- NOTE: If unable to accept climb rates, advise ATC on initial contact.
- NOTE: Upon reaching 10000 MSL, accelerate to and maintain 280K, if unable advise ATC.

SE-2, 14 MAY 2026 to 11 JUN 2026

SE-2, 14 MAY 2026 to 11 JUN 2026

DEPARTURE ROUTE DESCRIPTION

Climb on heading assigned by ATC for RADAR vectors to HMMPY, then on track 181° to KWEEN, then on assigned transition, maintain 3000, expect filed altitude 10 minutes after departure.

PITRW TRANSITION (KWEEN6.PITRW)
UNJAM TRANSITION (KWEEN6.UNJAM)

NOTE: Chart not to scale.

KWEEN SIX DEPARTURE (RNAV)
(KWEEN6.KWEEN) 14MAY26

ALBEMARLE, NORTH CAROLINA
STANLY COUNTY (VUJ)