

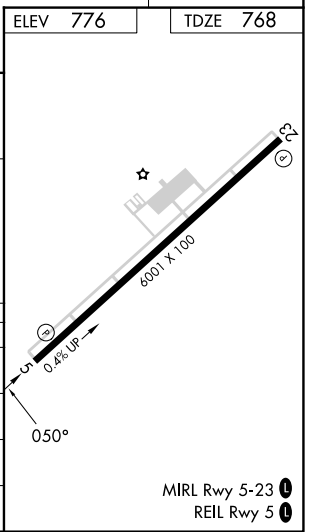
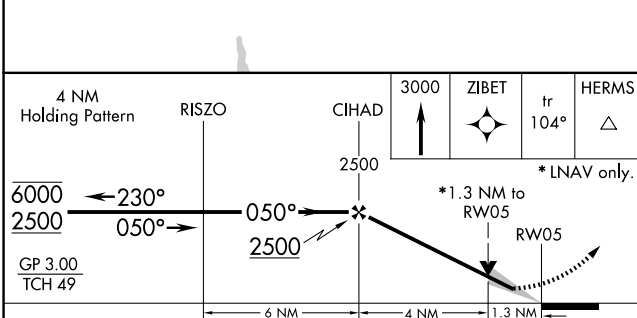
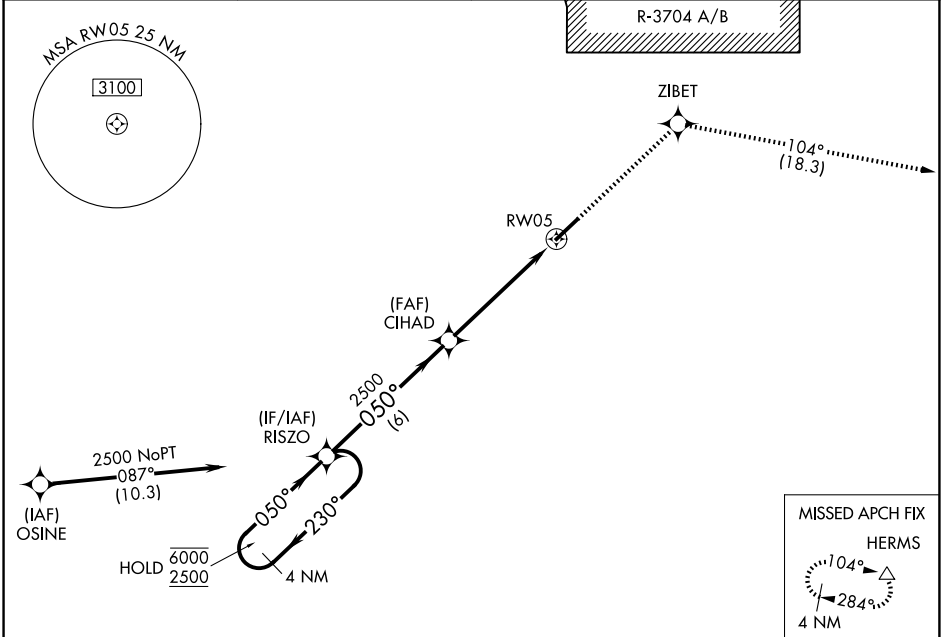
WAAS CH <b>77700</b> <b>W05A</b>	APP CRS <b>050°</b>	Rwy Ldg TDZE Apt Elev	<b>6001</b> <b>768</b> <b>776</b>
--	------------------------	-----------------------------	---

# RNAV (GPS) RWY 5

ADDINGTON FLD (EKK)

RNP APCH.	For uncompensated Baro-VNAV systems, LNAV/VNAV NA below -16°C or above 54°C.	MISSED APPROACH: Climb to 3000 direct ZIBET and on track 104° to HERMS and hold.
-----------	--	--

AWOS-3 <b>118.55</b>	LOUISVILLE APP CON <b>132.075 327.0</b>	CLNC DEL <b>119.45</b>	UNICOM <b>123.075</b> (CTAF) <b>0</b>
-------------------------	--	---------------------------	--



CATEGORY	A	B	C	D
LPV DA		968-3/4	200 (200-3/4)	
LNAV/VNAV DA		1053-7/8	285 (300-7/8)	
LNAV MDA	1200-1	432 (500-1)	1200-1 1/4	432 (500-1 1/4)
CIRCLING	1240-1 464 (500-1)	1260-1 484 (500-1)	1420-1 3/4 644 (700-1 3/4)	1760-3 984 (1000-3)

SE-1, 14 MAY 2026 to 11 JUN 2026

SE-1, 14 MAY 2026 to 11 JUN 2026