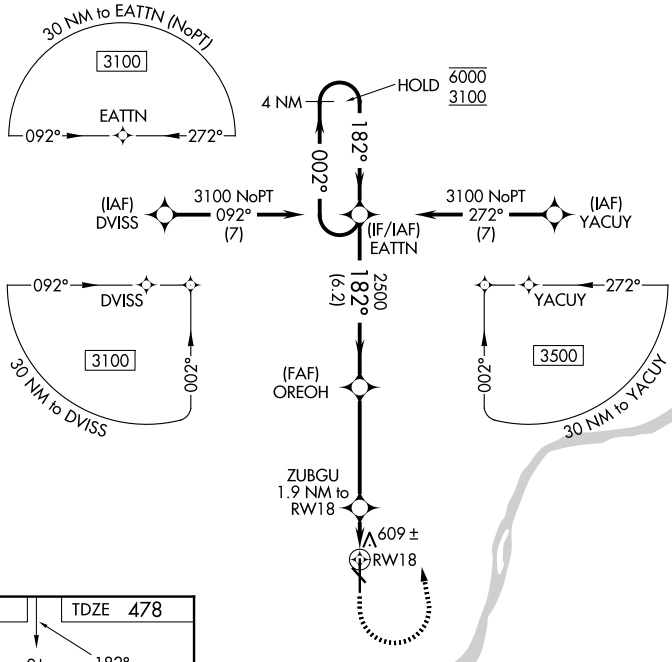


WAAS CH 82426	APP CRS 182°	Rwy Ldg TDZE Apt Elev	7000 478 478
W18A			

RNAV (GPS) RWY 18

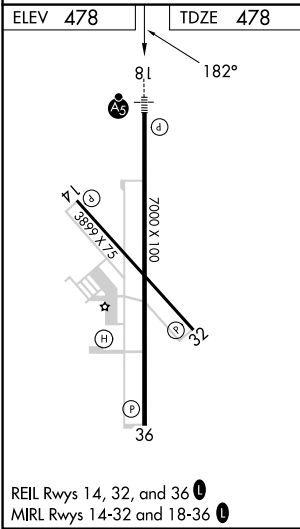
CLARK RGNL (JVY)

RNP APCH - GPS.		MALSR	MISSED APPROACH: Climb to 900 then climbing left turn to 3100 direct EATTN and hold.
<p>⚠ Circling NA for Cat D southwest of Rws 14 and 36. Circling Rwy 14, 32, 36 NA at night. For uncompensated Baro-VNAV systems, LNAV/VNAV NA below -15°C or above 54°C. For inop ALS increase LNAV/VNAV visibility to 1 SM.</p>			
AWOS-3T 118,575	LOUISVILLE APP CON 132,075 327.0	CLNC DEL 118,05	UNICOM 122.7 (CTAF) 0



EC-2, 14 MAY 2026 to 11 JUN 2026

EC-2, 14 MAY 2026 to 11 JUN 2026



900	3100	EATTN	4 NM Holding Pattern	
ZUBGU 1.9 NM to RWY 18	OREOH 2500	EATTN	6000 3100	
1 NM to RWY 18	1120	2500	GP 3.00° TCH 51	
1 NM	0.9 NM	4.3 NM	6.2 NM	
CATEGORY	A	B	C	D
LPV DA		678-½	200 (200-½)	
LNAV/VNAV DA		852-⅝	374 (400-⅝)	
LNAV MDA	860-½	382 (400-½)	860-⅝	382 (400-⅝)
CIRCLING	1000-1 522 (600-1)	1040-1 562 (600-1)	1060-1½ 582 (600-1½)	1100-2 622 (700-2)