

VOR/DME SHB <b>116.15</b> Chan <b>108 (Y)</b>	APP CRS <b>142°</b>	Rwy Ldg TDZE Apt Elev <b>N/A</b> <b>N/A</b> <b>909</b>
---	------------------------	---

**VOR-A**

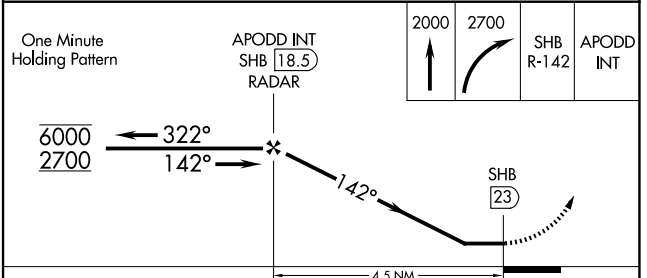
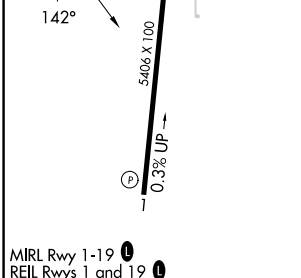
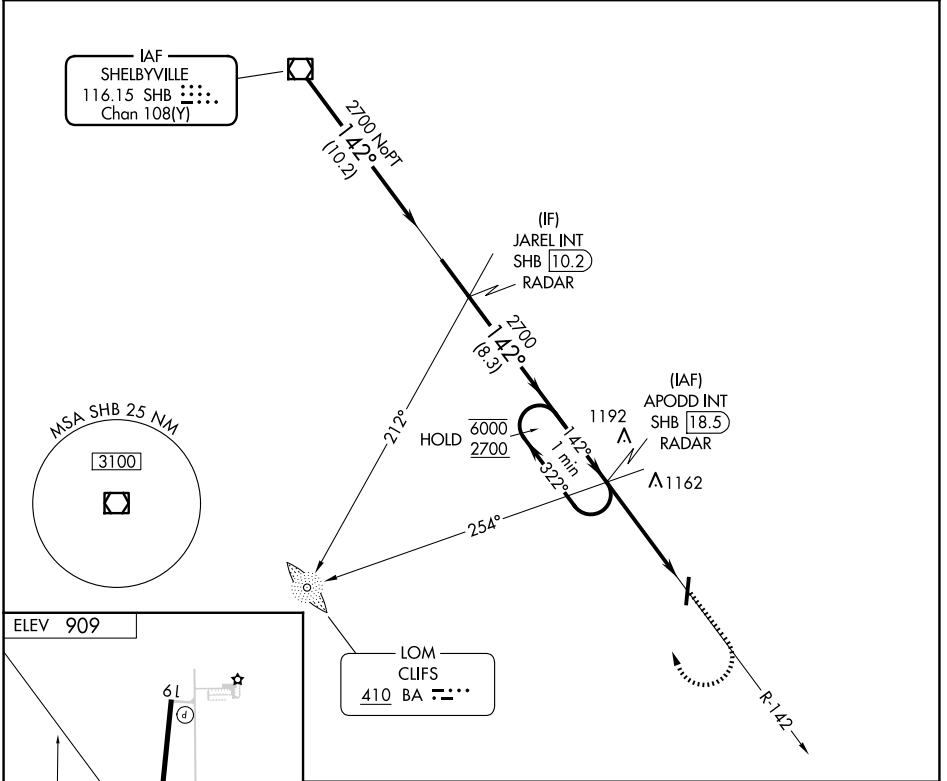
GREENSBURG MUNI (I34)

ADF or RADAR or DME required.

Use Columbus Muni altimeter setting, when not received, use Indianapolis Int altimeter setting and increase all MDAs 40 feet and visibility Cat C ¼ SM.

MISSED APPROACH: Climb to 2000 then climbing right turn to 2700 on SHB R-142 to APODD INT/SHB 18.5 DME/RADAR and hold.

BAK AWOS-3 <b>119.75</b>	INDIANAPOLIS APP CON <b>127.15</b>	CTAF <b>122.9</b>
-----------------------------	---------------------------------------	----------------------



FAF to MAP 4.5 NM					
Knots	60	90	120	150	180
Min:Sec	4:30	3:00	2:15	1:48	1:30
CATEGORY	A	B	C	D	
CIRCLING	1540-1 631 (700-1)	1640-1 731 (800-1)	1640-2 731 (800-2)	NA	

**VOR-A**

EC-2, 14 MAY 2026 to 11 JUN 2026

EC-2, 14 MAY 2026 to 11 JUN 2026