

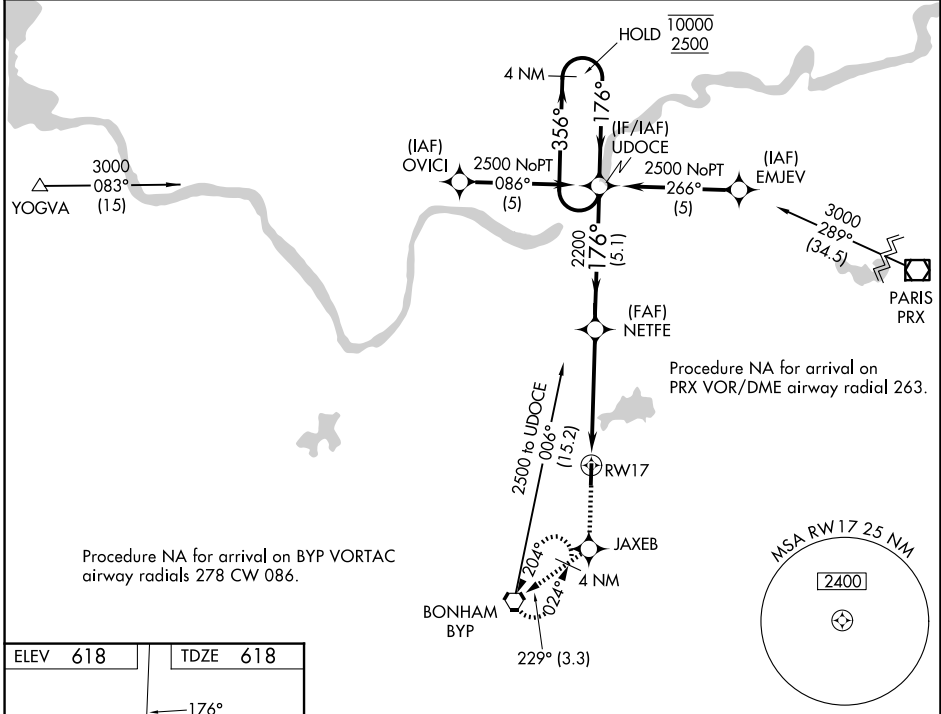
WAAS CH <b>99523</b> <b>W17A</b>	APP CRS <b>176°</b>	Rwy Ldg TDZE Apt Elev	<b>4000</b> <b>618</b> <b>618</b>
--	------------------------	-----------------------------	---

# RNAV (GPS) RWY 17

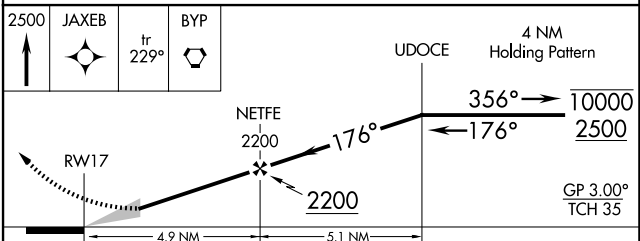
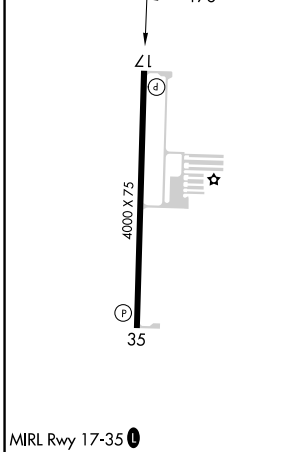
JONES FLD (F00)

RNP APCH - GPS.	MISSED APPROACH: Climb to 2500 direct JAXEB and on track 229° to BYP VORTAC and hold.
<p>▼ Rwy 17 helicopter visibility reduction below 1 SM NA. Baro-VNAV NA.</p> <p>▲ When local altimeter setting not received, use Durant altimeter setting.</p>	

AWOS-3 PT <b>118.05</b>	FORT WORTH CENTER <b>124.875 370.95</b>	UNICOM <b>122.8(CTAF)</b>
----------------------------	--	------------------------------



ELEV 618	TDZE 618
----------	----------



CATEGORY	A	B	C	D
LPV DA	906-1	288 (300-1)		NA
LNAV/VNAV DA	1030-1½	412 (500-1½)		NA
LNAV MDA	1180-1	562 (600-1)		NA
CIRCLING	1240-1 622 (700-1)	1400-1 782 (800-1)		NA

SC-2, 14 MAY 2026 to 11 JUN 2026

SC-2, 14 MAY 2026 to 11 JUN 2026