

BONHAM, TEXAS

AL-6722 (FAA)

25219

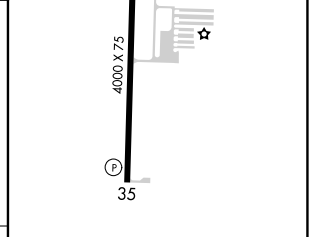
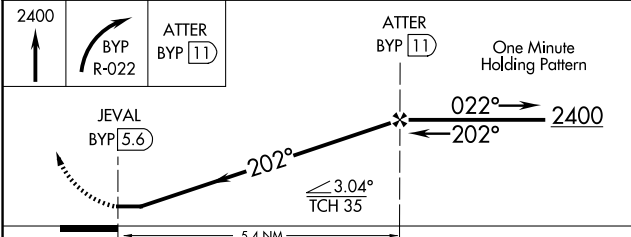
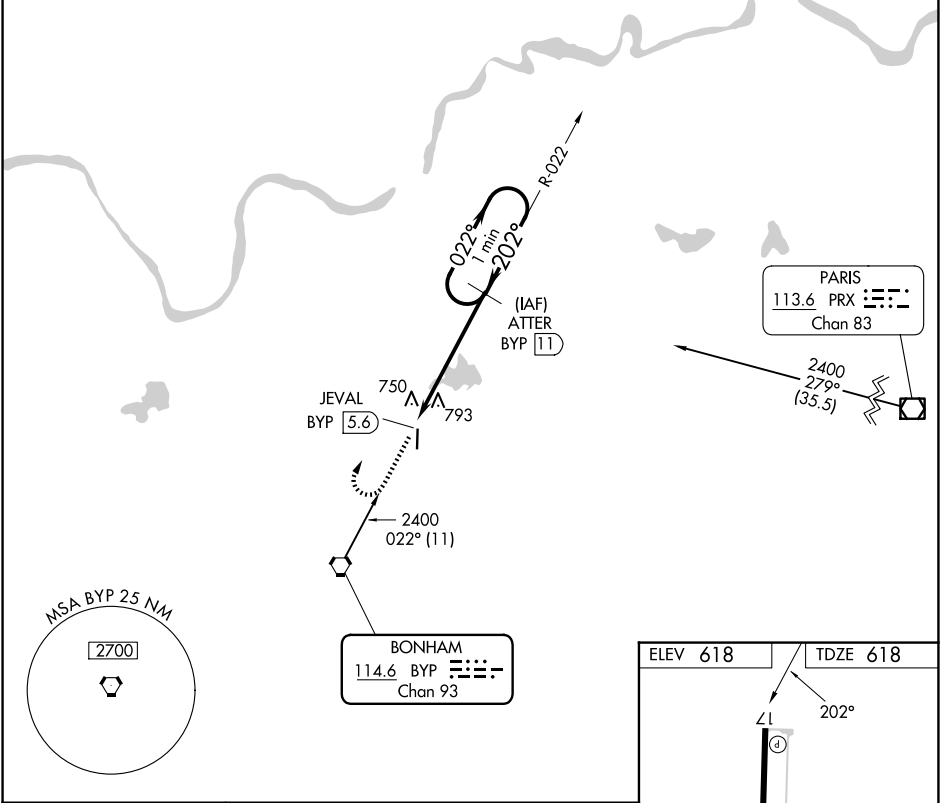
VORTAC BYP <b>114.6</b> Chan <b>93</b>	APP CRS <b>202°</b>	Rwy Ldg TDZE Apt Elev <b>4000</b> <b>618</b> <b>618</b>
--	------------------------	--

# VOR/DME RWY 17

JONES FLD (F00)

<b>NA</b> When local altimeter setting not received, use Durant altimeter setting.	MISSED APPROACH: Climb to 2400, then right turn via BYP R-022 to ATTER/11 DME and hold.
---	---

AWOS-3 PT <b>118.05</b>	FORT WORTH CENTER <b>124.875 370.95</b>	UNICOM <b>122.8(CTAF)</b>
----------------------------	--	------------------------------



CATEGORY	A	B	C	D
S-17	1200-1	582 (600-1)		NA
CIRCLING	1240-1 622 (700-1)	1400-1 782 (800-1)		NA

MIRL Rwy 17-35

BONHAM, TEXAS  
Amdt 1B 20MAY21

33°37'N-96°11'W

# VOR/DME RWY 17

JONES FLD (F00)

SC-2, 14 MAY 2026 to 11 JUN 2026

SC-2, 14 MAY 2026 to 11 JUN 2026