

APP CRS	Rwy Ldg	<b>2615</b>
<b>306°</b>	TDZE	<b>125</b>
	Apt Elev	<b>125</b>

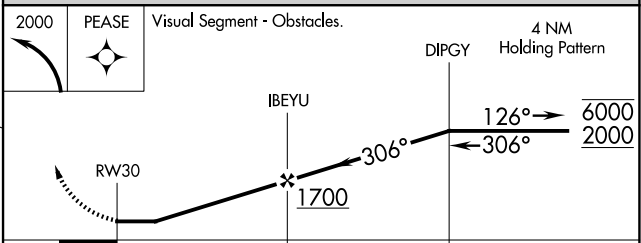
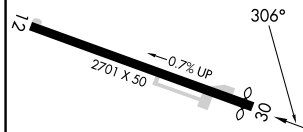
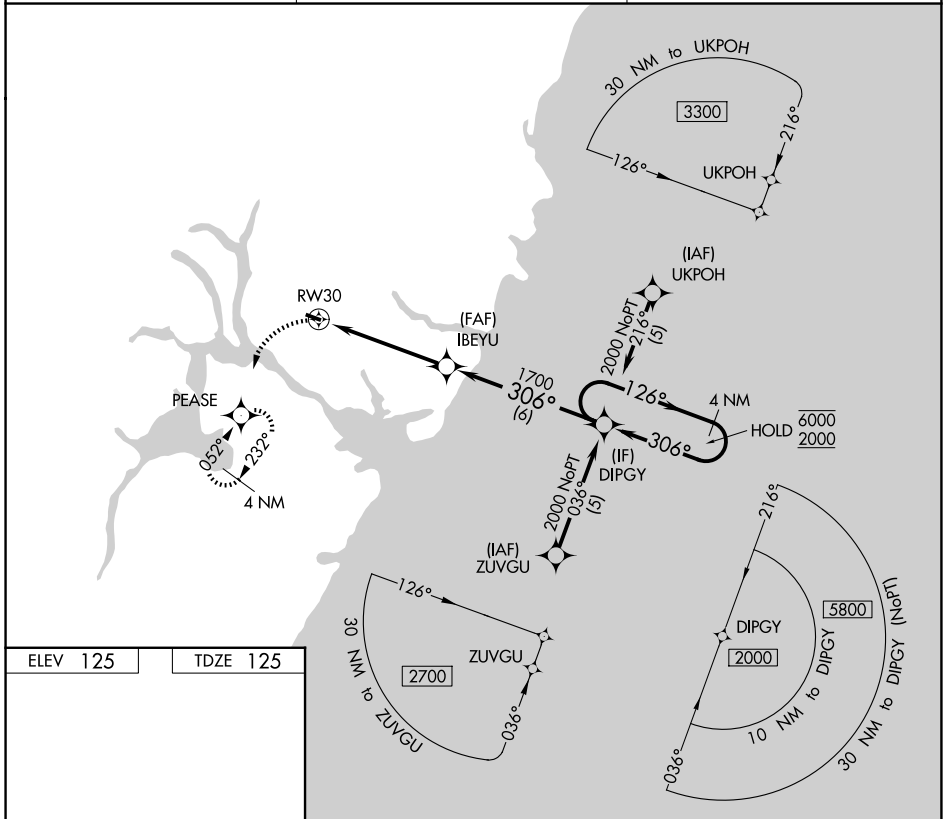
# RNAV (GPS) RWY 30

SEACOAST AIRFIELD (3B4)

RNP APCH.  
 Procedure NA at night. Rwy 30 helicopter visibility reduction below 1 SM NA. Use Portsmouth altimeter setting.

MISSED APPROACH: Climbing left turn to 2000 direct PEASE and hold, continue climb-in-hold to 2000.

PSM ASOS <b>132.05 273.5</b>	BOSTON APP CON <b>125.05 269.4</b>	CTAF <b>122.9</b>
---------------------------------	---------------------------------------	----------------------



CATEGORY	A	B	C	D
LNAV MDA	580-1	455 (500-1)		NA
CIRCLING	700-1	880-1		NA
	575 (600-1)	755 (800-1)		NA

ELIOT, MAINE  
 Amdt 1 17JUN21

43°09'N-70°46'W

# RNAV (GPS) RWY 30

NE-1, 14 MAY 2026 to 11 JUN 2026

NE-1, 14 MAY 2026 to 11 JUN 2026