

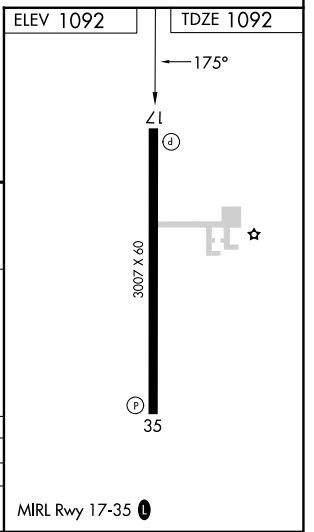
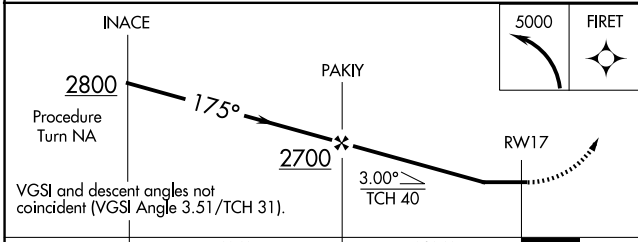
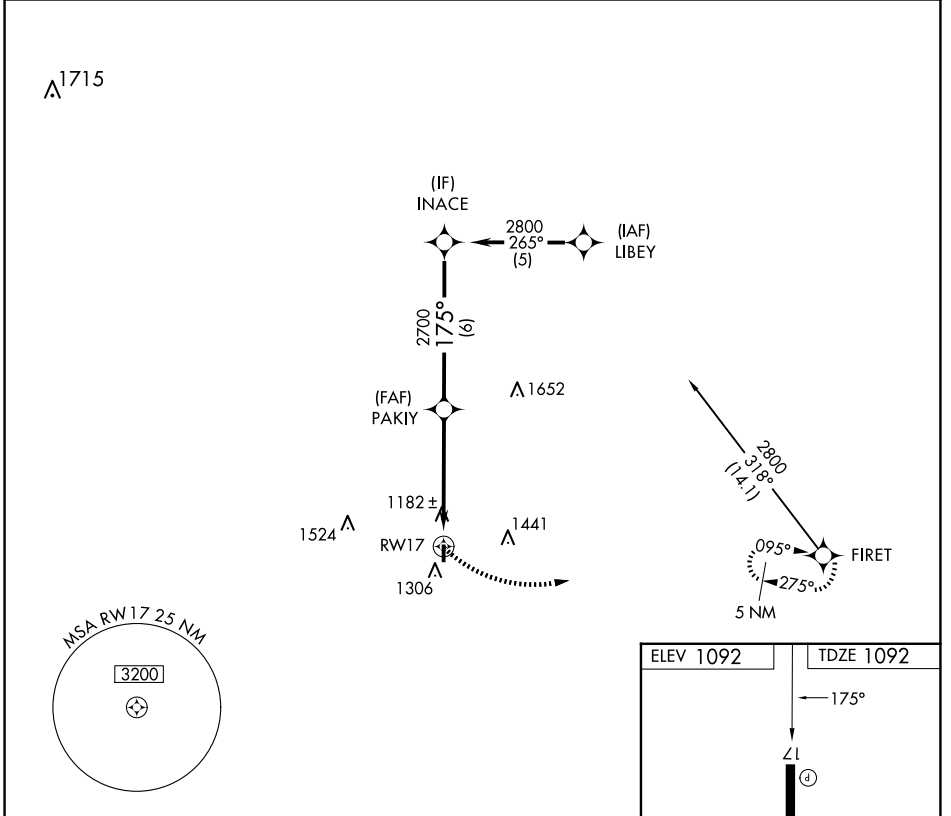
APP CRS 175°	Rwy Idg 3007
	TDZE 1092
	Apt Elev 1092

RNAV (GPS) RWY 17

MEDFORD MUNI (O53)

RNP APCH.	MISSED APPROACH: Climbing left turn to 5000 direct FIRET and hold.
▲ NA Use Ponca City Rgnl altimeter setting. Procedure NA at night.	

PNC ASOS 134.075	VANCE APP CON* 118.075 273.475	UNICOM 122.8(CTAF)
----------------------------	--	------------------------------



CATEGORY	A	B	C	D
LNAV MDA	1680-1¼	588 (600-1¼)	NA	NA
CIRCLING	1740-1¼ 648 (700-1¼)	1840-1¼ 748 (800-1¼)	NA	NA

SC-1, 14 MAY 2026 to 11 JUN 2026

SC-1, 14 MAY 2026 to 11 JUN 2026