

APP CRS	Rwy Ldg	N/A
050°	TDZE	N/A
	Apt Elev	7411

RNAV (GPS)-B

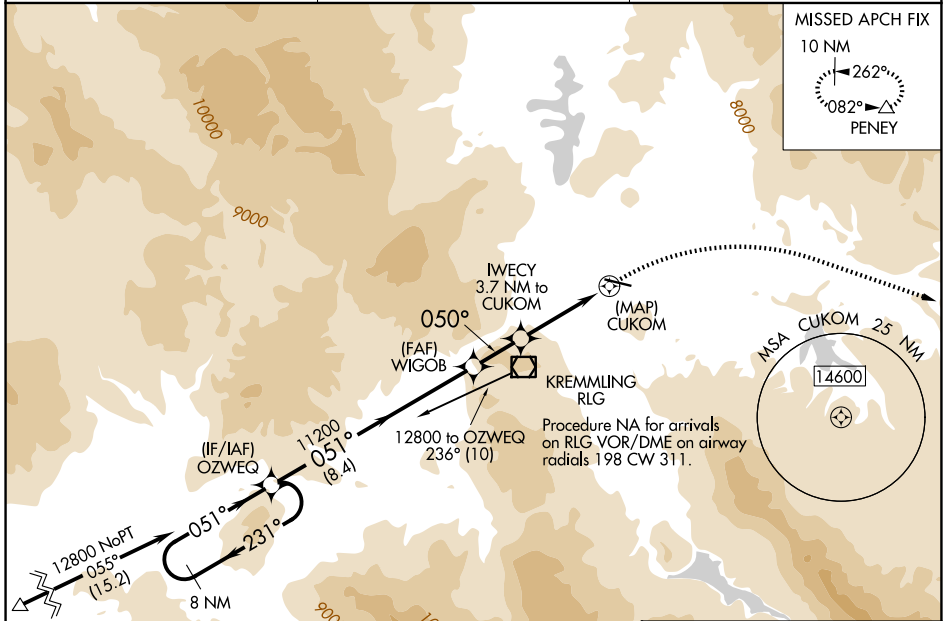
MC ELROY AIRFIELD (20V)

RNP APCH.

When local altimeter setting not received, procedure NA.
 Night Landing Rwy 9 NA. Circling NA south of Rwy 9-27.
 -18°C

MISSED APPROACH: Climbing right turn to 15600 direct PENNY and hold, continue climb-in-hold to 15600.

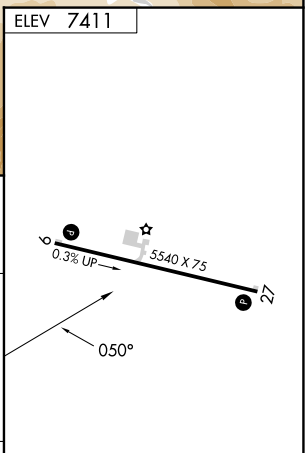
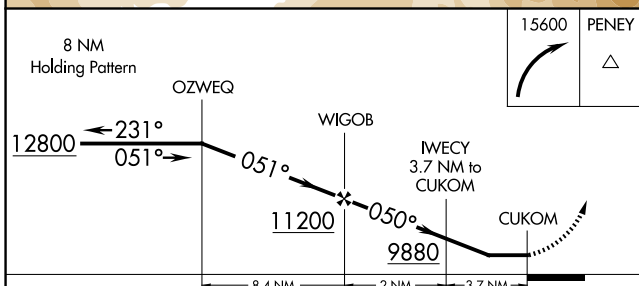
AWOS-3 118.425	DENVER CENTER 128.65 282.2	UNICOM 122.8 (CTAF) 0
--------------------------	--------------------------------------	---------------------------------



Procedure NA for arrivals at UVTUH on V591 southbound.

Procedure NA for arrivals on RLG VOR/DME on airway radials 198 CW 311.

ELEV 7411



CATEGORY	A	B	C	D
CIRCLING	9440-1¼ 2029 (2100-1¼)	9440-1½ 2029 (2100-1½)	9440-3 2029 (2100-3)	NA

REIL Rwys 9 and 27
 MIRL Rwy 9-27

SW-1, 14 MAY 2026 to 11 JUN 2026

SW-1, 14 MAY 2026 to 11 JUN 2026