

WAAS CH 42926 W22A	APP CRS 217°	Rwy Ldg TDZE Apt Elev	5505 706 706
--	------------------------	-----------------------------	---

RNAV (GPS) RWY 22

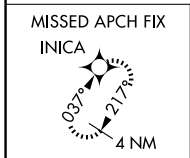
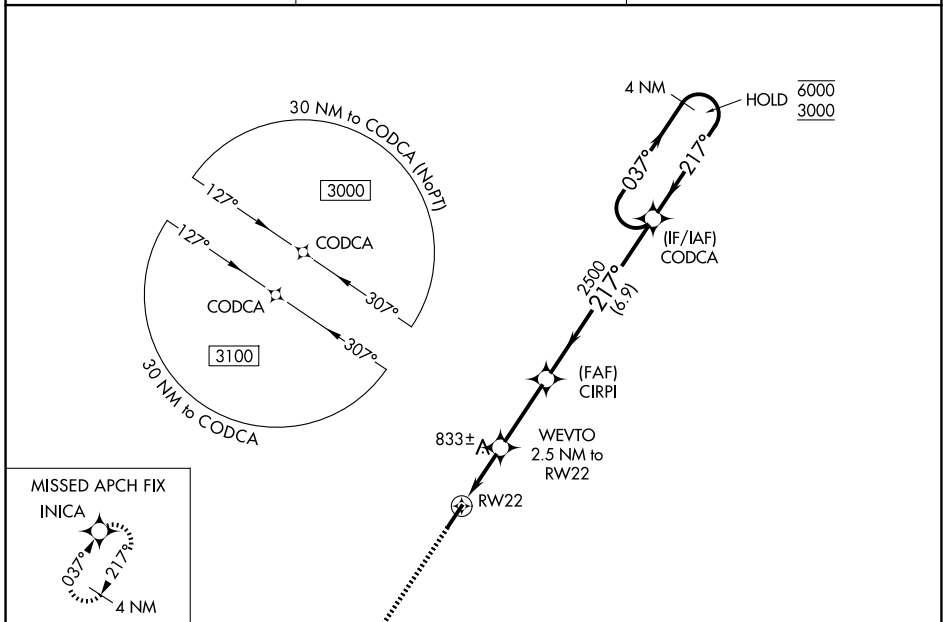
SPRINGFIELD ROBERTSON COUNTY (M91)

RNP APCH - GPS.

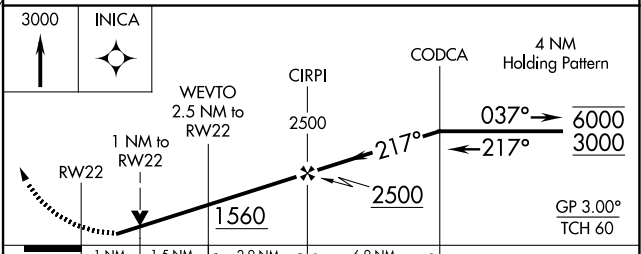
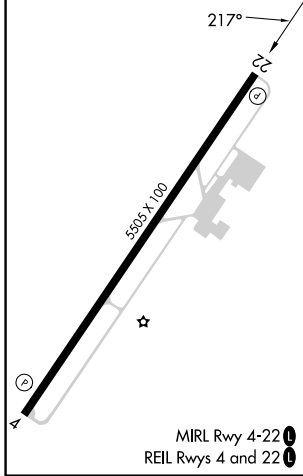
▼ Rwy 22 helicopter visibility reduction below 3/4 SM NA. For uncompensated Baro-VNAV systems,
▲ NA LNAV/VNAV NA below -16°C or above 39°C.

MISSED APPROACH:
Climb to 3000 direct INICA and hold.

AWOS-3 120.675	NASHVILLE APP CON 119.35 372.0	UNICOM 123.0 (CTAF) 0
--------------------------	--	---------------------------------



ELEV 706	TDZE 706
----------	----------



CATEGORY	A	B	C	D
LPV DA		975-7/8	269 (300-7/8)	
LNAV/VNAV DA		1010-7/8	304 (400-7/8)	
LNAV MDA	1100-1	394 (400-1)	1100-1 1/8	394 (400-1 1/8)
CIRCLING	1140-1 434 (500-1)	1160-1 454 (500-1)	1360-1 3/4 654 (700-1 3/4)	1540-2 3/4 834 (900-2 3/4)

SE-1, 14 MAY 2026 to 11 JUN 2026

SE-1, 14 MAY 2026 to 11 JUN 2026