

LOC/DME I-RIL <b>110.9</b> Chan <b>46</b>	APP CRS <b>258°</b>	Rwy Ldg TDZE Apt Elev <b>N/A</b> <b>N/A</b> <b>5537</b>
---	------------------------	--

**LOC-A**  
RIFLE GARFIELD COUNTY (R.I.L)

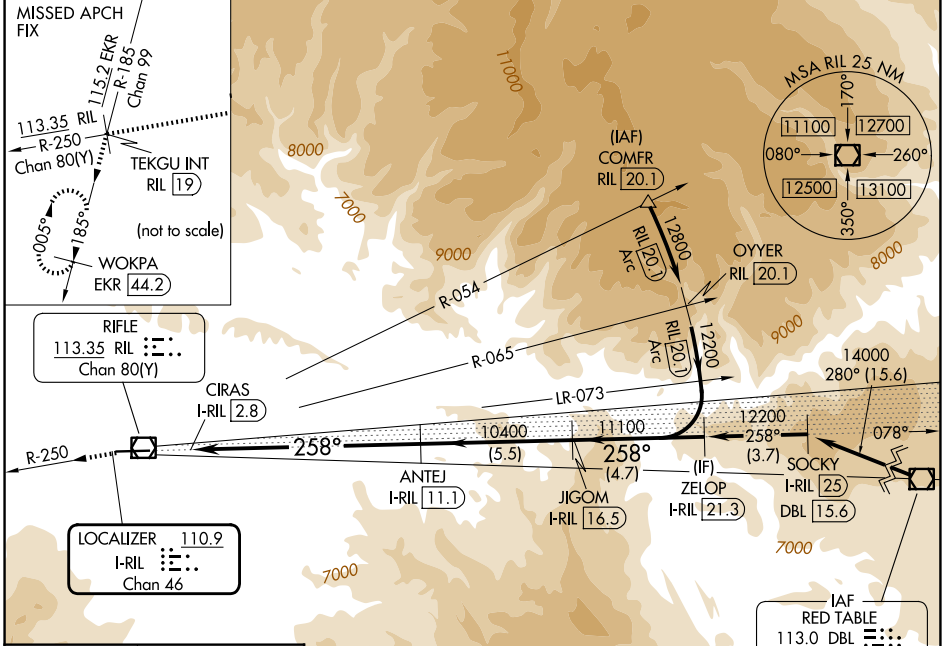
DME required.

**⚠** Circling NA south of Rwy 8-26 at night. Rwy 26 helicopter visibility reduction below 3/4 SM NA.

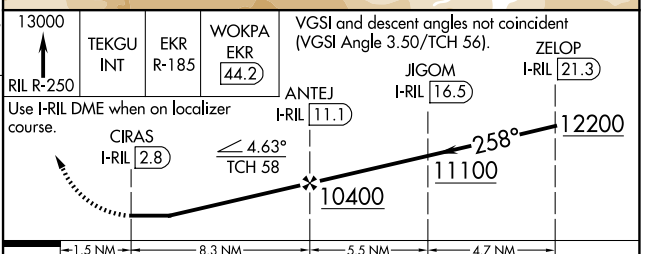
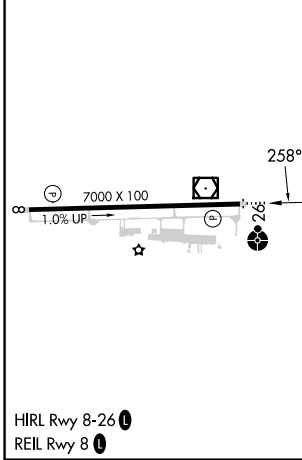
**⚠** -13°C

MISSED APPROACH: Climb to 13000 on RIL VOR/DME R-250 to TEKGU INT/RIL 19 DME and on EKR VOR/DME R-185 to WOKPA/EKR 44.2 DME and hold.

ASOS <b>135.275</b>	DENVER CENTER <b>134.95 327.075</b>	UNICOM <b>122.8 (CTAF) 0</b>
------------------------	--	---------------------------------



ELEV 5537



CATEGORY	A	B	C	D
CIRCLING	7920-1 3/4	2383 (2400-1 3/4)	7920-3 2383 (2400-3)	NA

SW-1, 14 MAY 2026 to 11 JUN 2026

SW-1, 14 MAY 2026 to 11 JUN 2026