

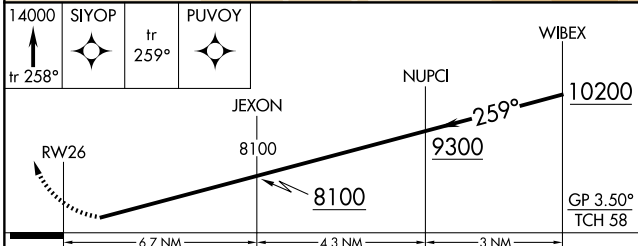
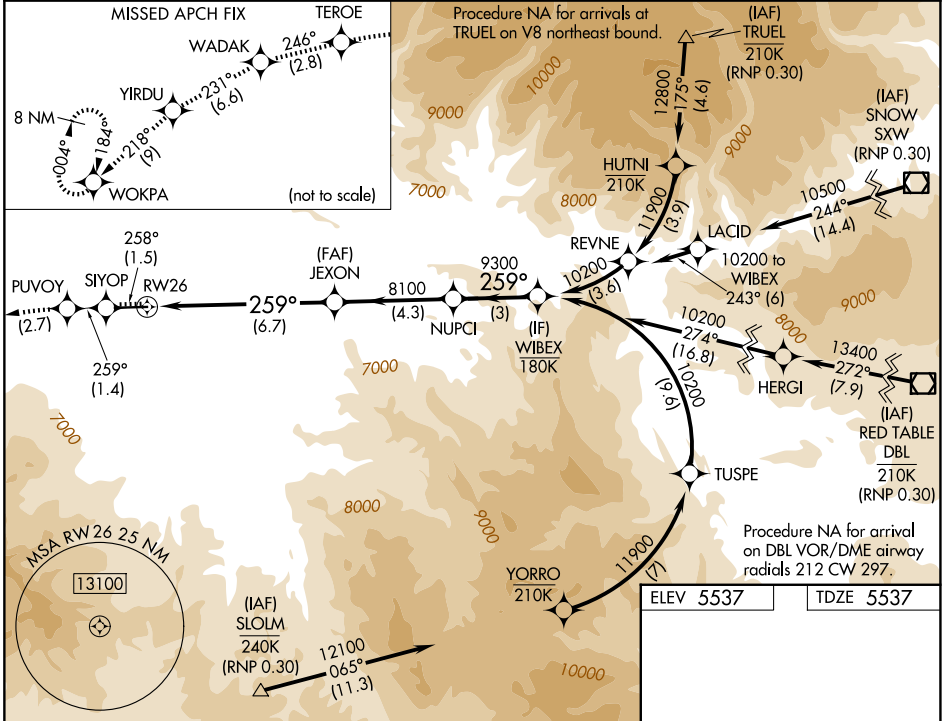
APP CRS	Rwy Ldg	<b>7000</b>
<b>259°</b>	TDZE	<b>5537</b>
	Apt Elev	<b>5537</b>

# RNAV (RNP) Z RWY 26

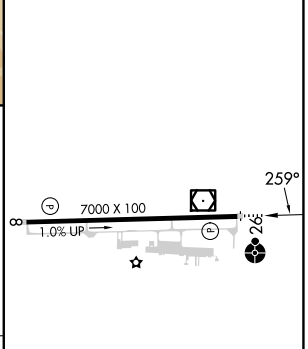
RIFLE GARFIELD COUNTY (R.I.L.)

RNP AR APCH - GPS, RF, min RNP 0.30. Authorization required. Missed approach requires RNP <1.00.		MISSED APPROACH: Climb to 14000 on track 258° to SIYOP and on track 259° to PUVOY left turn to TEROE and on track 246° to WADAK and on track 231° to YIRDU and on track 218° to WOKPA and hold, continue climb-in-hold to 14000. *Missed approach requires minimum climb of 415 feet per NM to 6800.
For uncompensated Baro-VNAV systems, procedure NA below -21°C or above 35°C. When VGSI inop, procedure NA at night. Inop table does not apply to RNP 0.30. For inop ALS, increase RNP 0.10 -13°C Cats A and B visibility to 1 3/8 SM.	ODALS 	

ASOS <b>135.275</b>	DENVER CENTER <b>134.95 327.075</b>	UNICOM <b>122.8 (CTAF) 0</b>
------------------------	--	---------------------------------



ELEV 5537	TDZE 5537
-----------	-----------



CATEGORY	A	B	C	D
RNP 0.10 DA*		6006-1 1/4	469 (500-1 1/4)	
RNP 0.30 DA		6387-2 1/2	850 (900-2 1/2)	

## AUTHORIZATION REQUIRED

HIRL Rwy 8-26 0  
 REIL Rws 8 0

SW-1, 14 MAY 2026 to 11 JUN 2026

SW-1, 14 MAY 2026 to 11 JUN 2026