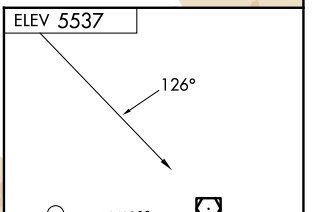
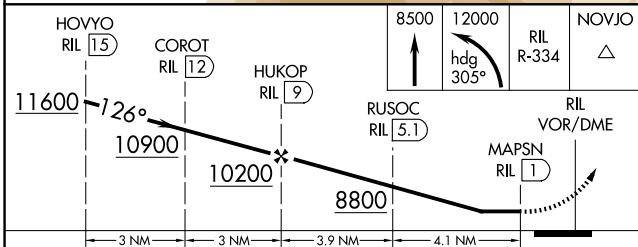
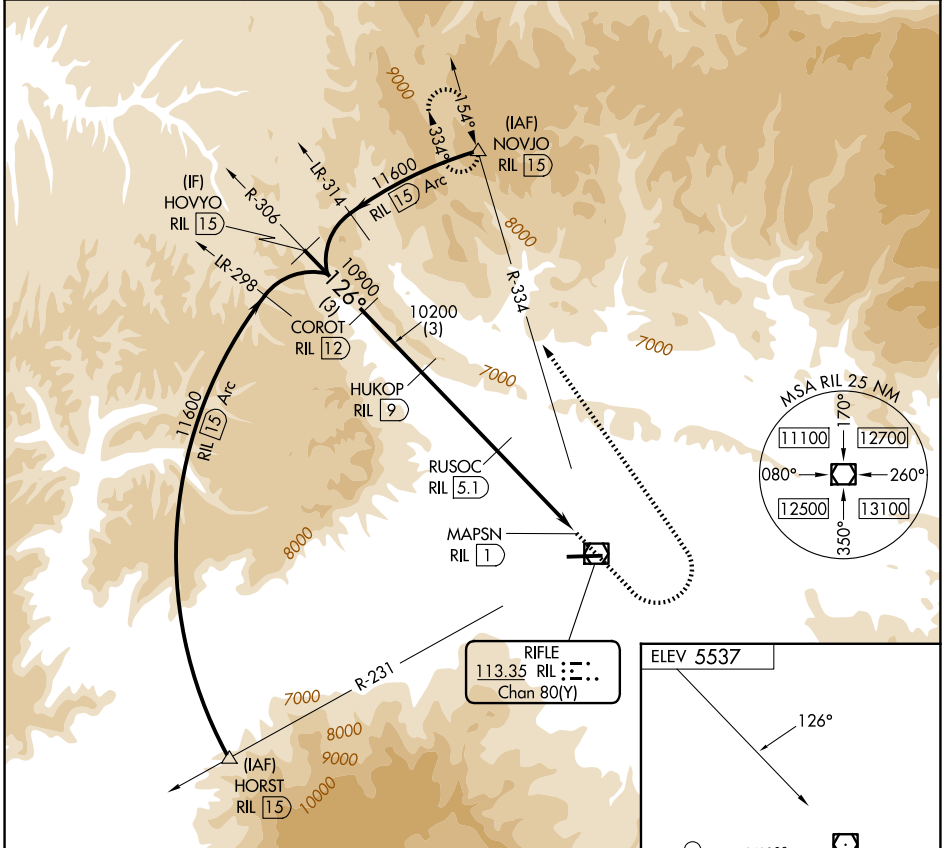


VOR/DME RIL 113.35 Chan 80 (Y)	APP CRS 126°	Rwy Ldg TDZE Apt Elev N/A N/A 5537
--	------------------------	--

VOR/DME-C
RIFLE GARFIELD COUNTY (RIL)

<p>7 A 3</p> <p>-13°C</p>	<p>Circling NA south of Rwy 8-26 at night.</p>	<p>MISSED APPROACH: Climb to 8500 then climbing left turn 12000 on heading 305° and RIL VOR/DME R-334 to NOVJO/15 DME and hold, continue climb-in-hold to 12400.</p>
--	--	--

<p>ASOS 135.275</p>	<p>DENVER CENTER 134.95 327.075</p>	<p>UNICOM 122.8 (CTAF) 0</p>
--------------------------------	--	--



CATEGORY	A	B	C	D
CIRCLING	7360-1¼ 1823 (1900-1¼)	7360-1½ 1823 (1900-1½)	7360-3 1823 (1900-3)	NA

<p>8500</p> <p>12000</p> <p>hdg 305°</p> <p>RIL R-334</p> <p>NOVJO</p>	<p>RIFLE 113.35 RIL 113.35 Chan 80(Y)</p>	<p>RIFLE VOR/DME</p> <p>MAPSN RIL 1</p>	<p>HIRL Rwy 8-26 0</p> <p>REIL Rwy 8 0</p>
--	---	---	--

SW-1, 14 MAY 2026 to 11 JUN 2026

SW-1, 14 MAY 2026 to 11 JUN 2026