

APP CRS	Rwy Idg	3252
146°	TDZE	391
	Apt Elev	391

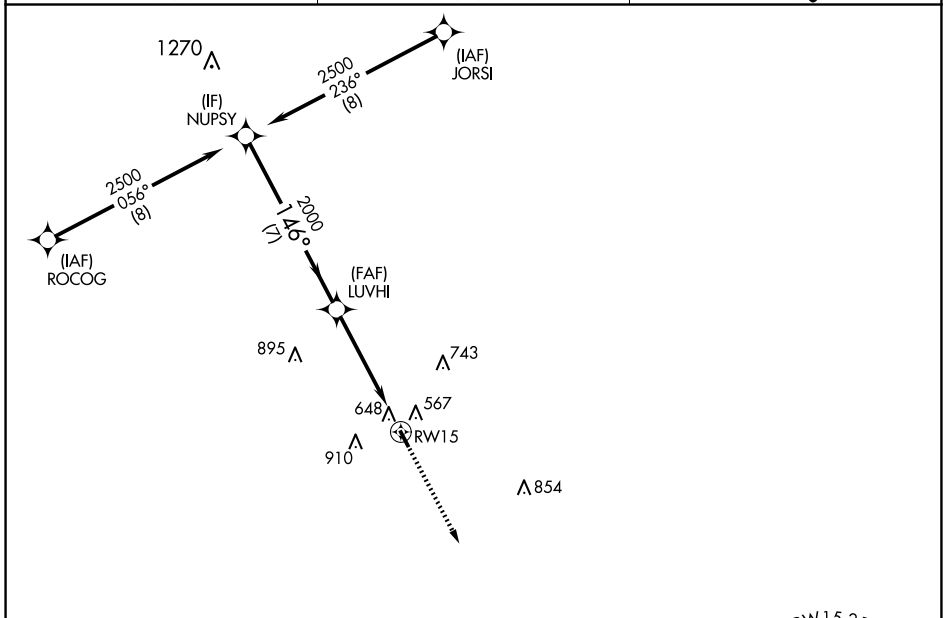
RNAV (GPS) RWY 15

CALDWELL MUNI (RWV)

RNP APCH - GPS.
 RADAR required.
 ⚠ When local altimeter setting not received, use College Station altimeter setting and increase all MDA 60 feet. Circling NA east of Rwy 15-33. Procedure NA at night. Rwy 15 helicopter visibility reduction below 1 SM NA.

MISSED APPROACH: Climb to 2000 direct KOKEC and hold.

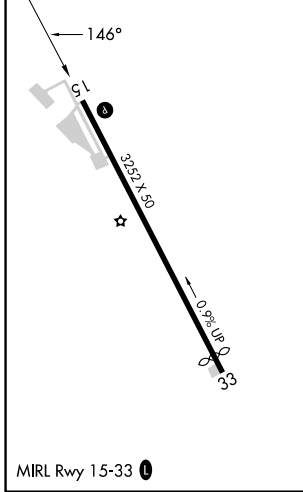
AWOS-3PT 118.35	HOUSTON APP CON 134.3 360.85	CTAF 122.9
---------------------------	--	----------------------



SC-5, 14 MAY 2026 to 11 JUN 2026

SC-5, 14 MAY 2026 to 11 JUN 2026

ELEV 391	TDZE 391
----------	----------



NUPSY 2500 146° 7 NM	LUVHI 2000 3.00° TCH 36 4.9 NM	RWY 15	2000 ↑	KOKEC ⬠
			VGSI and descent angles not coincident (VGSI Angle 3.00/TCH 42).	

CATEGORY	A	B	C	D
LNAV MDA	960-1	569 (600-1)	NA	
CIRCLING	1000-1 609 (700-1)	1220-1¼ 829 (900-1¼)	NA	