

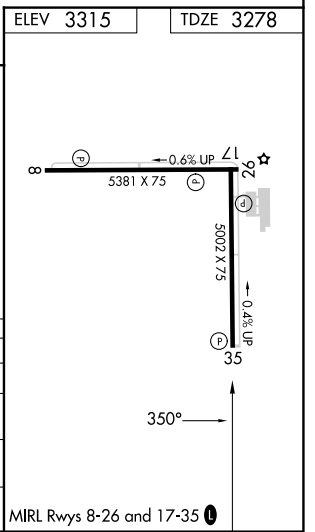
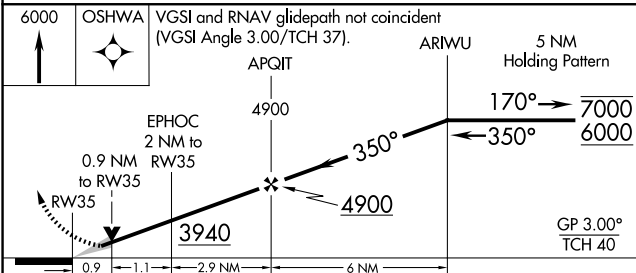
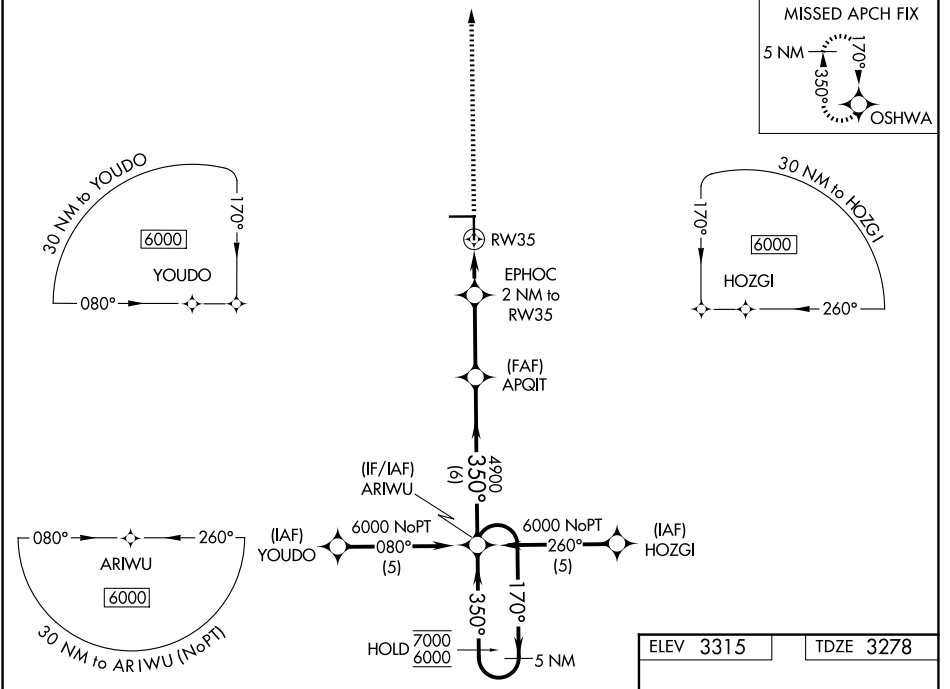
WAAS CH <b>72918</b> <b>W35A</b>	APP CRS <b>350°</b>	Rwy Ldg TDZE Apt Elev	<b>5002</b> <b>3278</b> <b>3315</b>
--	------------------------	-----------------------------	---

# RNAV (GPS) RWY 35

GAINES COUNTY (GNC)

RNP APCH - GPS.		MISSED APPROACH: Climb to 6000 direct OSHWA and hold, continue climb-in-hold to 6000.
For uncompensated Baro-VNAV systems, LNAV/VNAV NA below -21°C or above 54°C. Circling NA at night.		

AWOS-3 <b>118.075</b>	FORT WORTH CENTER <b>132.6 269.05</b>	UNICOM <b>122.8</b> (CTAF)
--------------------------	--	-------------------------------



CATEGORY	A	B	C	D
LPV DA	3528-3/4	250 (300-3/4)		NA
LNAV/VNAV DA	3591-7/8	313 (300-7/8)		NA
LNAV MDA	3600-1	322 (300-1)		NA
CIRCLING	3840-1 525 (600-1)	3880-1 565 (600-1)	3960-1 3/4 645 (700-1 3/4)	NA

SC-2, 14 MAY 2026 to 11 JUN 2026

SC-2, 14 MAY 2026 to 11 JUN 2026