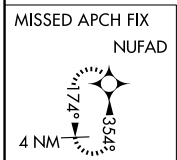
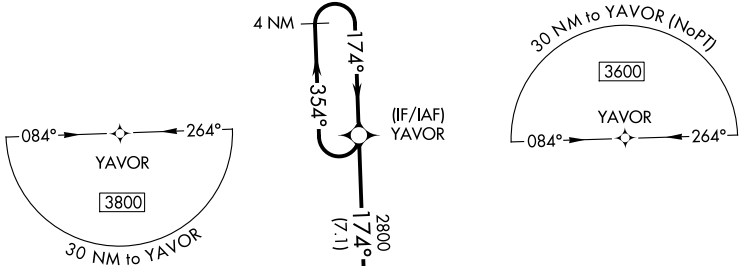


WAAS CH <b>81923</b> <b>W18A</b>	APP CRS <b>174°</b>	Rwy Ldg <b>5001</b> TDZE <b>1177</b> Apt Elev <b>1193</b>
--	------------------------	---

# RNAV (GPS) RWY 18

SUNDANCE (HSD)

RNP APCH - GPS.			MISSED APPROACH: Climb to 3200 direct NUFAD and hold.
For uncompensated Baro-VNAV systems, LNAV/VNAV NA below -17°C or above 54°C. Baro-VNAV and VDP NA when using PWA altimeter setting.			
AWOS-3 <b>120.975</b>	OKE CITY APP CON <b>124.6 266.8</b>	CLNC DEL <b>123.7</b>	UNICOM <b>122.7 (CTAF)</b>



2283  $\Delta$

WAROP 1.7 NM to RWY 18

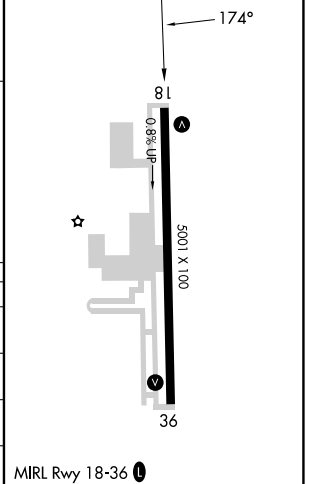
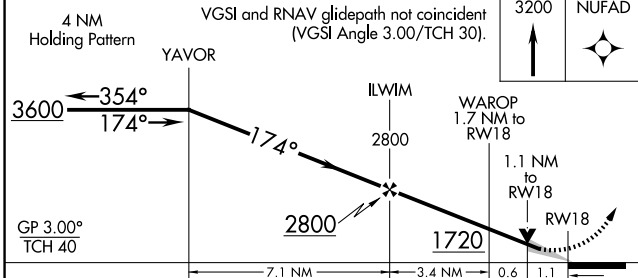
RWY 18  $\Delta$  1279  $\pm$

1441  $\Delta$  1208  $\Delta$  1538  $\Delta$

1520  $\Delta$

2758  $\Delta$

ELEV 1193	TDZE 1177
-----------	-----------



CATEGORY	A	B	C	D
LPV DA	1427-1	250 (300-1)		NA
LNAV/VNAV DA	1473-1½	296 (300-1½)		NA
LNAV MDA	1540-1	363 (400-1)	1540-1½ 363 (400-1½)	NA
CIRCLING	1740-1 547 (600-1)	1840-1 647 (700-1)	1840-1¾ 647 (700-1¾)	NA

MIRL Rwy 18-36  $\Delta$

SC-1, 14 MAY 2026 to 11 JUN 2026

SC-1, 14 MAY 2026 to 11 JUN 2026