

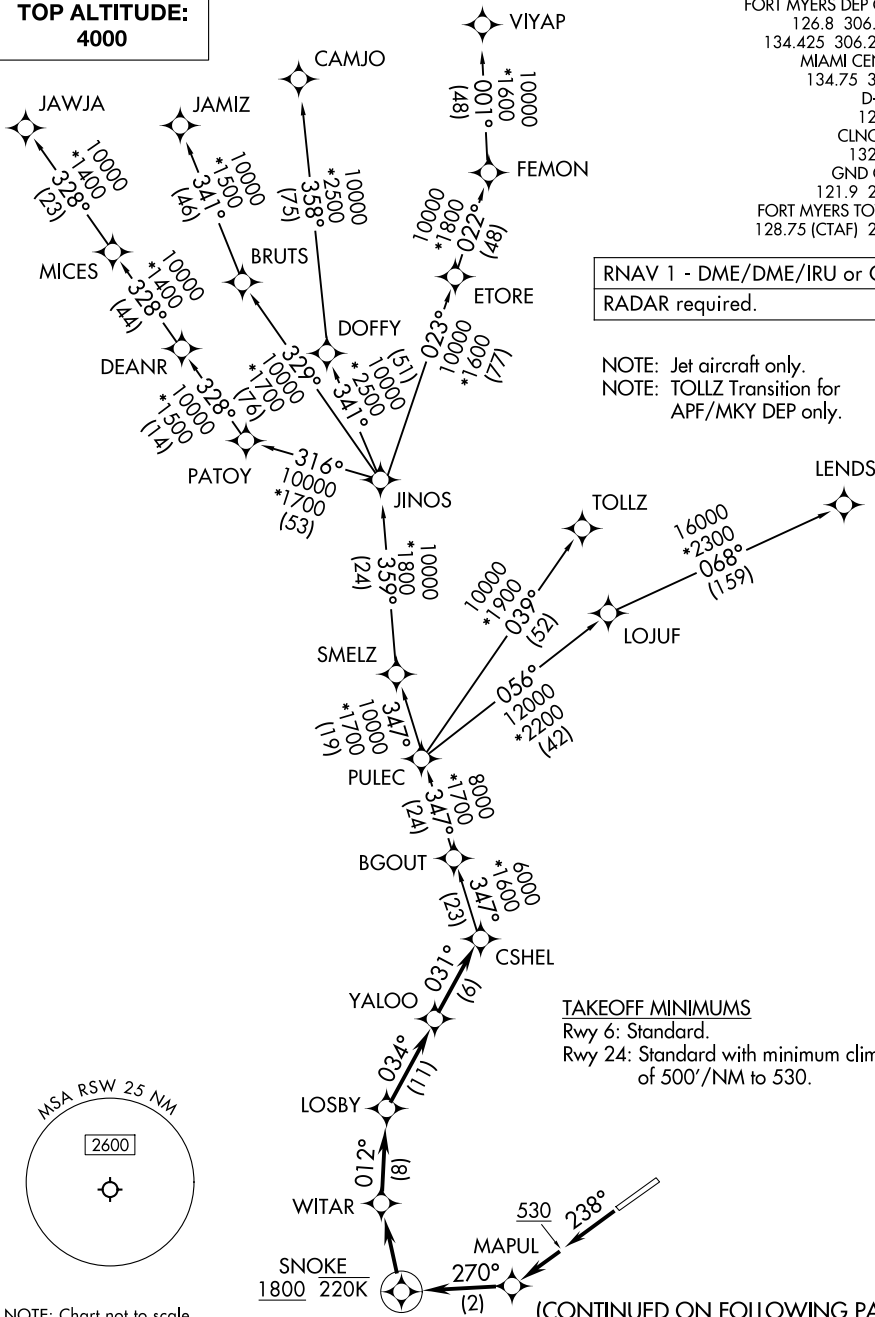
CSHEL EIGHT DEPARTURE (RNAV)

**TOP ALTITUDE:
4000**

FORT MYERS DEP CON ★
 126.8 306.2 (6)
 134.425 306.2 (24)
 MIAMI CENTER
 134.75 322.5
 D-ATIS
 124.65
 CLNC DEL
 132.075
 GND CON
 121.9 257.8
 FORT MYERS TOWER ★
 128.75 (CTAF) 257.8

RNAV 1 - DME/DME/IRU or GPS.
 RADAR required.

NOTE: Jet aircraft only.
 NOTE: TOLLZ Transition for
 APF/MKY DEP only.



NOTE: Chart not to scale.

(CONTINUED ON FOLLOWING PAGE)

CSHEL EIGHT DEPARTURE (RNAV)

SE-3, 14 MAY 2026 to 11 JUN 2026

SE-3, 14 MAY 2026 to 11 JUN 2026

CSHEL EIGHT DEPARTURE (RNAV)



DEPARTURE ROUTE DESCRIPTION

TAKEOFF RUNWAY 6: Climb on assigned heading for vectors to CSHEL on assigned transition. Maintain 4000. Expect filed altitude 10 minutes after departure.

TAKEOFF RUNWAY 24: Climb on heading 238° to 530, then continue climb direct MAPUL, then on track 270° to cross SNOKE at or above 1800 and at or below 220K, then right turn direct WITAR, then on track 012° to LOSBY, then on track 034° to YALOO, then on track 031° to CSHEL, thence. . .

. . .on assigned transition. Maintain 4000. Expect filed altitude 10 minutes after departure.

CAMJO TRANSITION (CSHEL8.CAMJO)

JAMIZ TRANSITION (CSHEL8.JAMIZ)

JAWJA TRANSITION (CSHEL8.JAWJA)

LENDZ TRANSITION (CSHEL8.LENDZ)

TOLLZ TRANSITION (CSHEL8.TOLLZ)

VIYAP TRANSITION (CSHEL8.VIYAP)

SE-3, 14 MAY 2026 to 11 JUN 2026

SE-3, 14 MAY 2026 to 11 JUN 2026