

WAAS CH 65619 W06A	APP CRS 058°	Rwy Idg 12000 TDZE 27 Apt Elev 30
--	------------------------	--

RNAV (GPS) Y RWY 6

SOUTHWEST FLORIDA INTL (RSW)

RNP APCH - GPS.

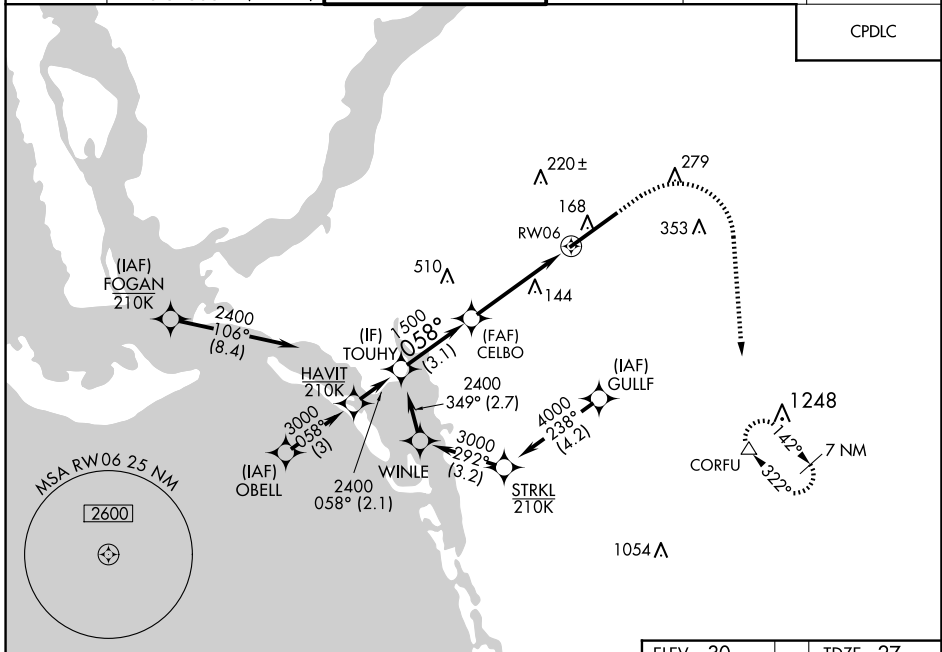
▼ For uncompensated Baro-VNAV systems, LNAV/VNAV NA below 4°C or above 54°C. For inop ALS, increase LNAV/VNAV all Cats visibility to RVR 5500, and LNAV Cats C and D visibility to RVR 5500.



MISSED APPROACH: Climb to 1000 then climbing right turn to 2300 direct CORFU and hold.

D-ATIS 124.65	FORT MYERS APP CON ★ 125.15 306.2 (RWY 6) 126.8 306.2 (RWY 24)	FORT MYERS TOWER ★ 128.75 (CTAF) 0 257.8	GND CON 121.9 257.8	CLNC DEL 132.075	UNICOM 122.95
-------------------------	--	---	-------------------------------	----------------------------	-------------------------

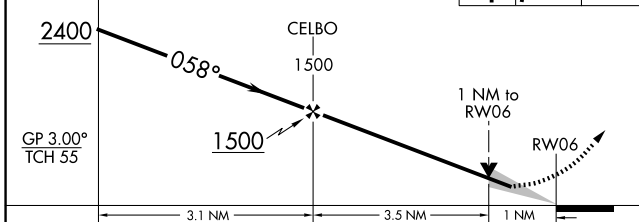
CPDLC



SE-3, 14 MAY 2026 to 11 JUN 2026

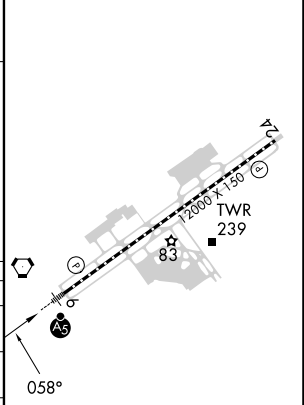
SE-3, 14 MAY 2026 to 11 JUN 2026

VGSI and RNAV glidepath not coincident (VGSI Angle 3.00/TCH 69).



ELEV 30	TDZE 27
---------	---------

CATEGORY	A	B	C	D
LPV DA		227/18	200 (200-½)	
LNAV/VNAV DA		392/35	365 (400-¾)	
LNAV MDA	400/24	373 (400-½)	400/35	373 (400-¾)
CIRCLING	560-1	530 (600-1)	580-1½ 550 (600-½)	660-2 630 (700-2)



REIL Rwy 24
TDZ/CL Rwy 6
HIRL Rwy 6-24