

SCUBY EIGHT DEPARTURE

FORT MYERS, FLORIDA

TOP ALTITUDE:
3000

RADAR required.

- ★ FORT MYERS DEP CON
119.75 (Rwy 24)
124.125 (Rwy 6)
371.85
- MIAMI CENTER
134.75 322.5
- D-ATIS
124.65
- CLNC DEL
132.075
- GND CON
121.9 257.8
- ★ FORT MYERS TOWER
128.75 (CTAF) 257.8

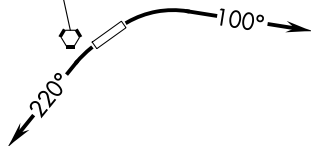
ORLANDO
112.2 ORL
Chan 59

ST. PETERSBURG
116.4 PIE
Chan 111

LAKELAND
116.0 LAL
Chan 107

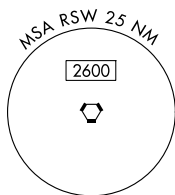
SARASOTA
117.0 SRQ
Chan 117

LEE COUNTY
114.15 RSW
Chan 88(Y)



TAKEOFF MINIMUMS
Rwy 6, 24: Standard.

KEY WEST
113.5 EYW
Chan 82



NOTE: Chart not to scale.

DEPARTURE ROUTE DESCRIPTION

TAKEOFF RUNWAY 6: Climbing right turn heading 100° or as assigned for vectors to join filed route, thence. . . .

TAKEOFF RUNWAY 24: Climbing left turn heading 220° or as assigned for vectors to join filed route, thence. . . .

. . . .all aircraft maintain 3000 or assigned altitude. Expect further clearance to filed altitude within 10 minutes after departure.

SCUBY EIGHT DEPARTURE