

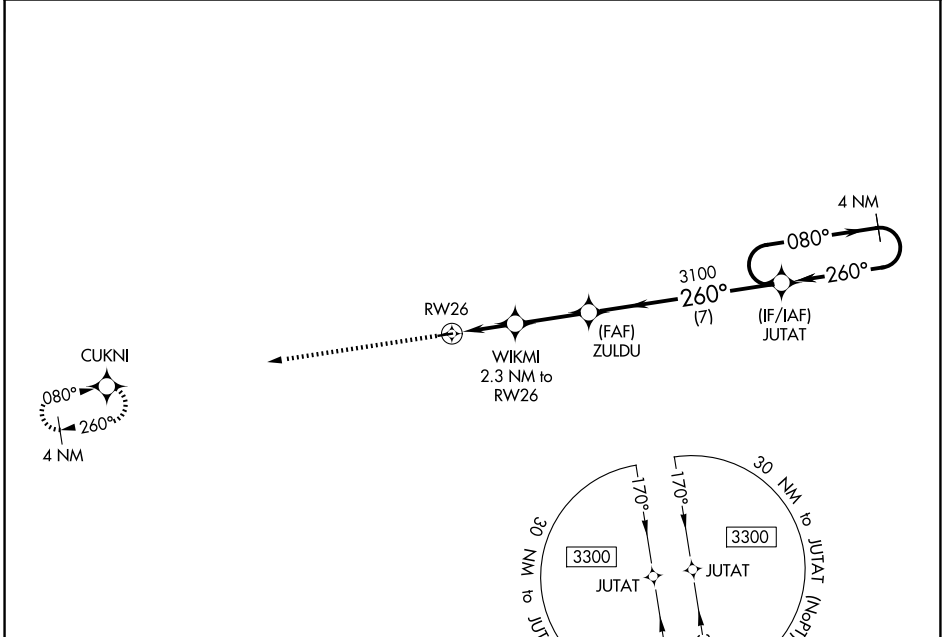
WAAS CH <b>93736</b> <b>W26A</b>	APP CRS <b>260°</b>	Rwy Ldg TDZE <b>2922</b> <b>1476</b> Apt Elev <b>1476</b>
--	------------------------	--

# RNAV (GPS) RWY 26

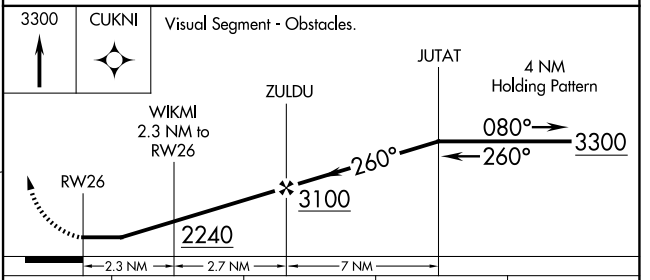
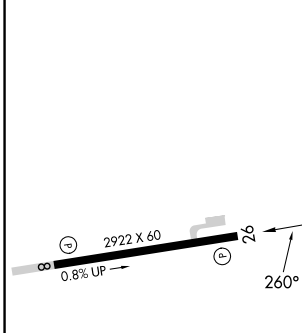
MOUNTAIN GROVE MEML (1M0)

<b>▼</b> <b>▲</b> NA	DME/DME RNP-0.3 NA. Procedure NA at night. Use Fort Leonard Wood altimeter setting, when not received use Springfield altimeter setting and increase all MDA 20 feet. Helicopter visibility reduction below 1 SM NA.	MISSED APPROACH: Climb to 3300 direct CUKNI and hold.
-------------------------	--	---

TBN ASOS <b>118.7</b>	KANSAS CITY CENTER <b>128.35 284.675</b>	CTAF <b>122.9</b> <b>0</b>
--------------------------	---	-------------------------------



ELEV <b>1476</b>	TDZE <b>1476</b>
------------------	------------------



CATEGORY	A	B	C	D
LP MDA	2120-1	644 (700-1)	NA	
LNAV MDA	2160-1	684 (700-1)	NA	
CIRCLING	2160-1 684 (700-1)	2240-1 764 (800-1)	NA	

MIRL Rwy 8-26 **0**  
REIL Rwy 8 and 26 **0**

NC-3, 14 MAY 2026 to 11 JUN 2026

NC-3, 14 MAY 2026 to 11 JUN 2026