

WAAS CH 93726 W36A	APP CRS 358°	Rwy Idg TDZE Apt Elev	3001 1434 1434
--	------------------------	-----------------------------	---

RNAV (GPS) RWY 36

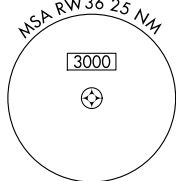
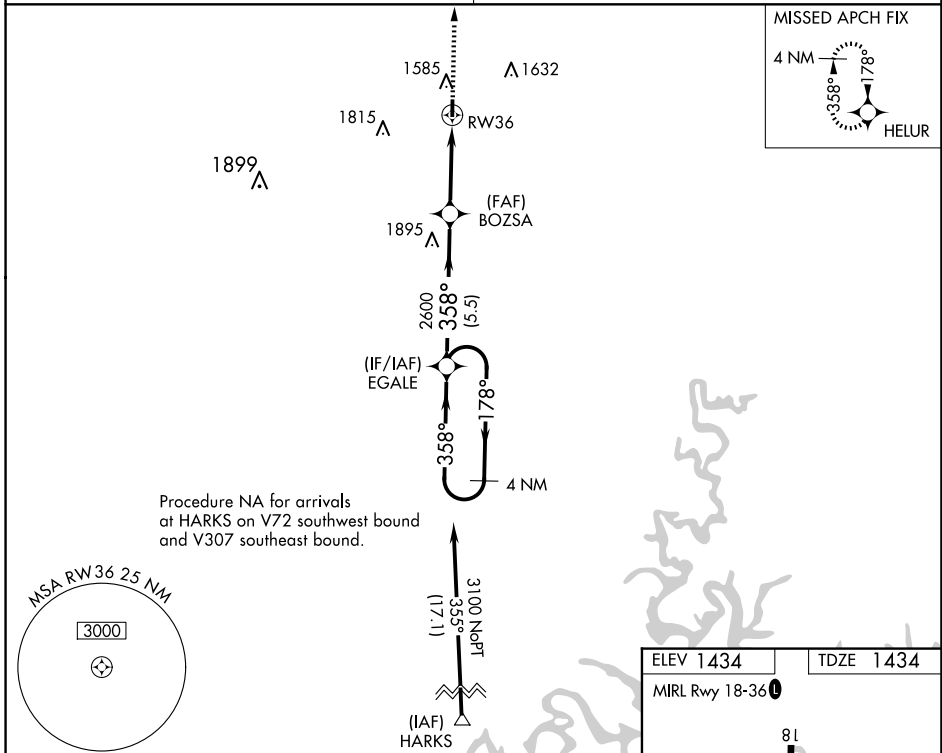
JERRY SUMNERS SR AURORA MUNI (2H2)

RNP APCH. **NA** Use Springfield altimeter setting; when not received, use Branson altimeter setting and increase all MDA 40 feet. Procedure NA at night. Rwy 36 helicopter visibility reduction below 1 SM NA.

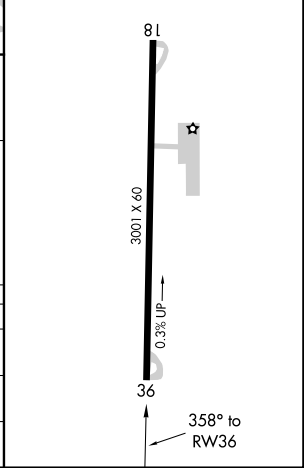
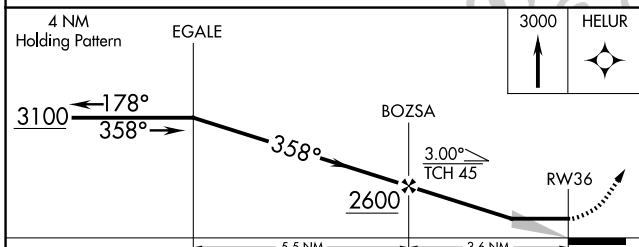
MISSED APPROACH: Climb to 3000 direct HELUR and hold.

SPRINGFIELD APP CON
124.95 318.2

UNICOM
122.8 (CTAF) 0



ELEV 1434	TDZE 1434
MIRL Rwy 18-36 0	



CATEGORY	A	B	C	D
LP MDA	2060-1	626 (700-1)		NA
INAV MDA	2060-1	626 (700-1)		NA
CIRCLING	2060-1 626 (700-1)	2080-1 646 (700-1)		NA

NC-3, 14 MAY 2026 to 11 JUN 2026

NC-3, 14 MAY 2026 to 11 JUN 2026