

VORTAC SGF <b>116.9</b> Chan <b>116</b>	APP CRS <b>305°</b>	Rwy Idg TDZE Apt Elev <b>N/A</b> <b>N/A</b> <b>1042</b>
---	------------------------	--

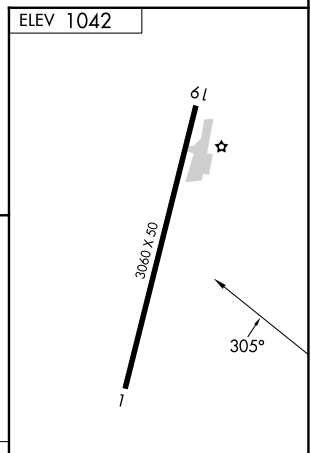
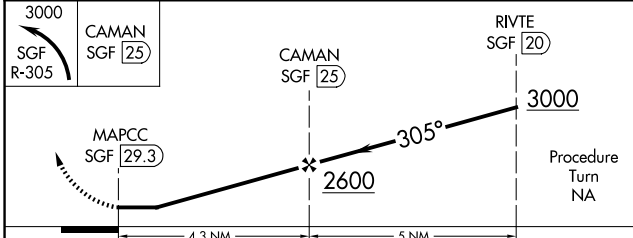
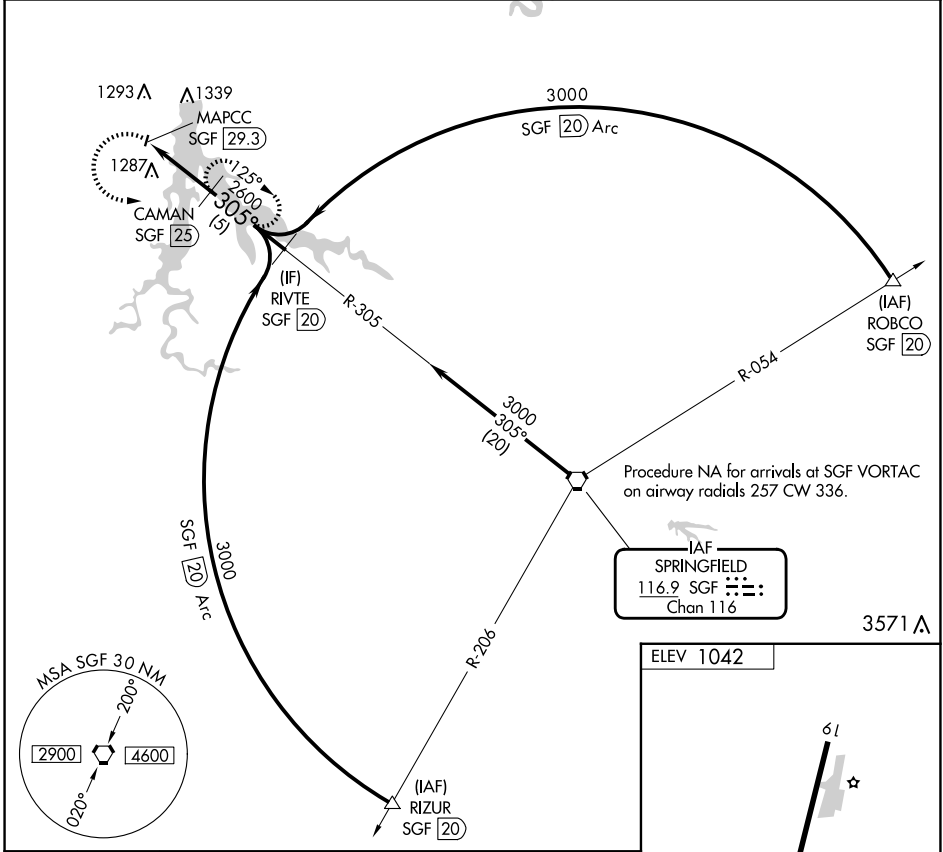
# VOR/DME-A

STOCKTON LAKE (MO3)

**NA** Use Nevada altimeter setting; when not received, use Springfield altimeter setting and increase all MDA 20 feet. Procedure NA at night. Helicopter visibility reduction below 1 SM NA.

**MISSED APPROACH:** Climbing left turn to 3000 on SGF VORTAC R-305 to CAMAN/25 DME and hold.

NVD AWOS-3PT <b>119.175</b>	SPRINGFIELD APP CON <b>124.95</b>	CTAF <b>122.9</b>
--------------------------------	--------------------------------------	----------------------



CATEGORY	A	B	C	D
CIRCLING	1620-1 578 (600-1)	1700-1¼ 658 (700-1¼)	NA	

LIRL Rwy 1-19

NC-3, 14 MAY 2026 to 11 JUN 2026

NC-3, 14 MAY 2026 to 11 JUN 2026