

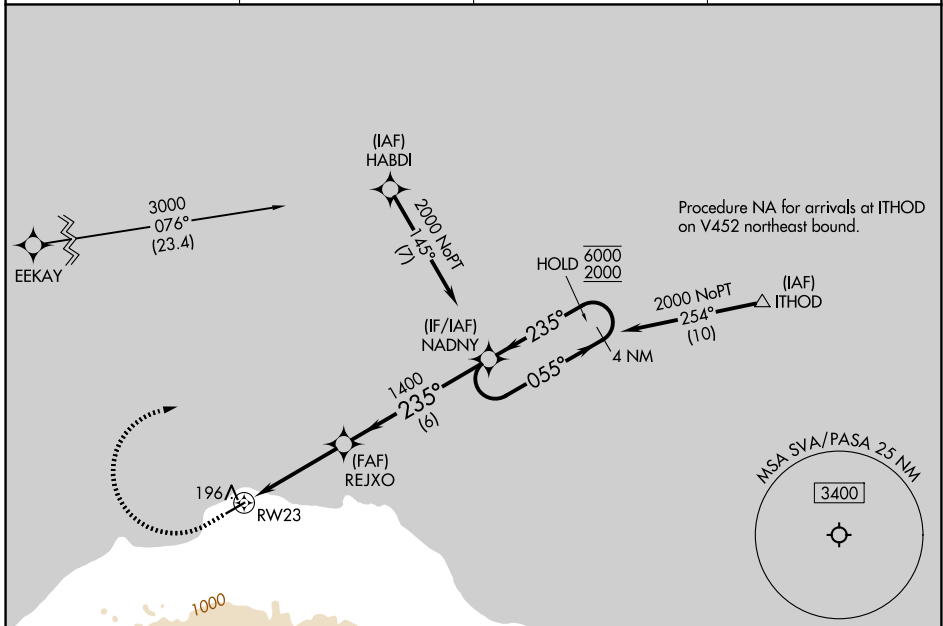
APP CRS	Rwy Ldg	<b>4400</b>
<b>235°</b>	TDZE	<b>58</b>
	Apt Elev	<b>59</b>

# RNAV (GPS) RWY 23

SAVOONGA (SVA) (PASA)

RNP APCH - GPS.		MISSED APPROACH: Climb to 510 then climbing right turn to 2000 direct NADNY and hold.	
Circling NA southeast of Rwy 5-23.			

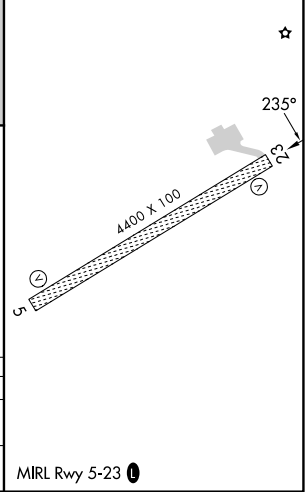
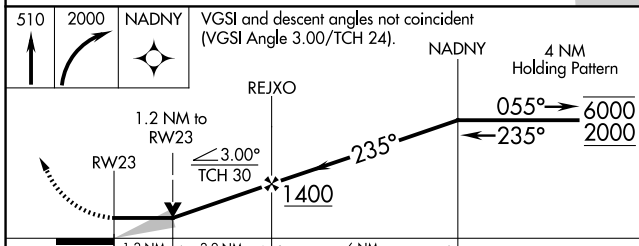
AWOS-3P <b>121.3</b>	ANCHORAGE CENTER <b>132.2 281.4</b>	NOME RADIO <b>122.3</b>	CTAF <b>122.7</b>
-------------------------	--	----------------------------	----------------------



AK, 14 MAY 2026 to 09 JUL 2026

AK, 14 MAY 2026 to 09 JUL 2026

ELEV 59	TDZE 58
---------	---------



CATEGORY	A	B	C	D
LNAV MDA	460-1	402 (500-1)	460-1 1/8	402 (500-1 1/8)
CIRCLING	520-1	461 (500-1)	780-2 721 (800-2)	1100-3 1041 (1100-3)

MIRL Rwy 5-23