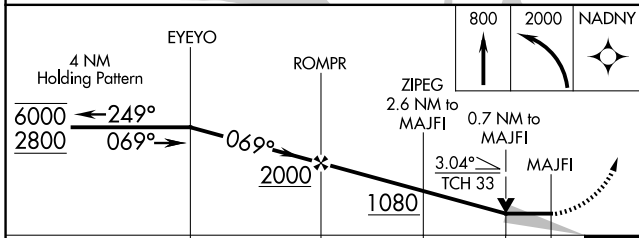
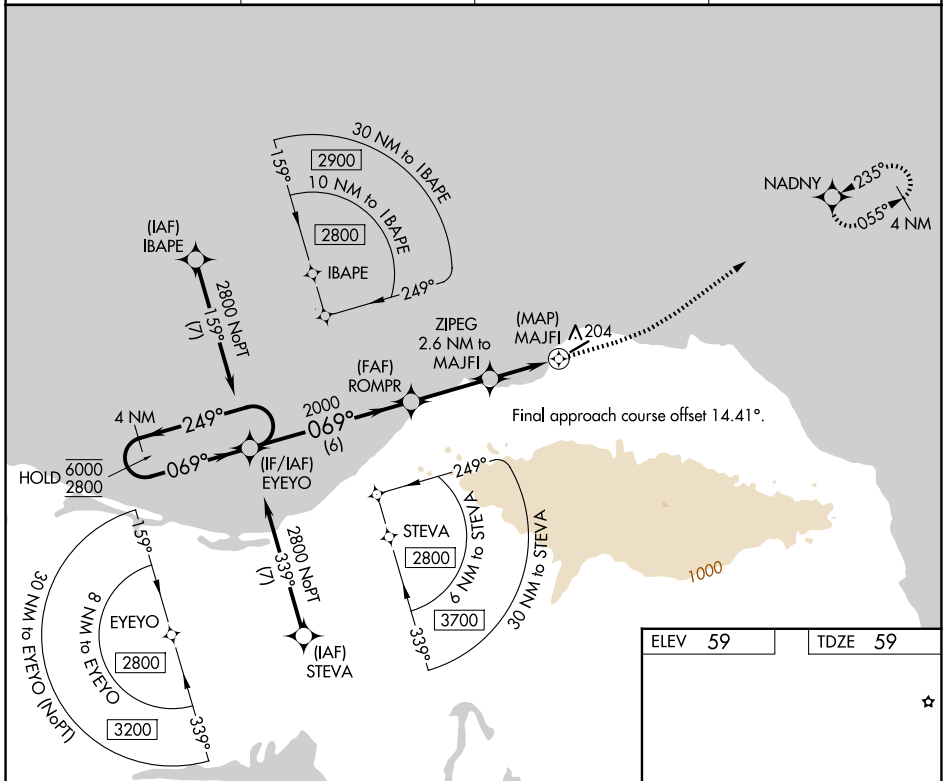


APP CRS	Rwy Ldg	4400
069°	TDZE	59
	Apt Elev	59

RNAV (GPS) Y RWY 5

SAVOONGA (SVA) (PASA)

RNP APCH - GPS.		MISSED APPROACH: Climb to 800, then climbing left turn to 2000 direct NADNY and hold.	
Circling NA southeast of Rwy 5-23.		AWOS-3P 121.3	ANCHORAGE CENTER 132.2 281.4
		NOME RADIO 122.3	CTAF 122.70



ELEV 59	TDZE 59
---------	---------

MRL Rwy 5-23

CATEGORY	A	B	C	D
LNVA MDA	460-1	401 (500-1)	460-1 1/8	401 (500-1 1/8)
CIRCLING	520-1	461 (500-1)	780-2 721 (800-2)	1100-3 1041 (1100-3)

AK, 14 MAY 2026 to 09 JUL 2026

AK, 14 MAY 2026 to 09 JUL 2026