

VOR/DME ULL 117.3 Chan 120	APP CRS 229°	Rwy Ldg TDZE Apt Elev	4400 58 59
---	------------------------	-----------------------------	---------------------------------------

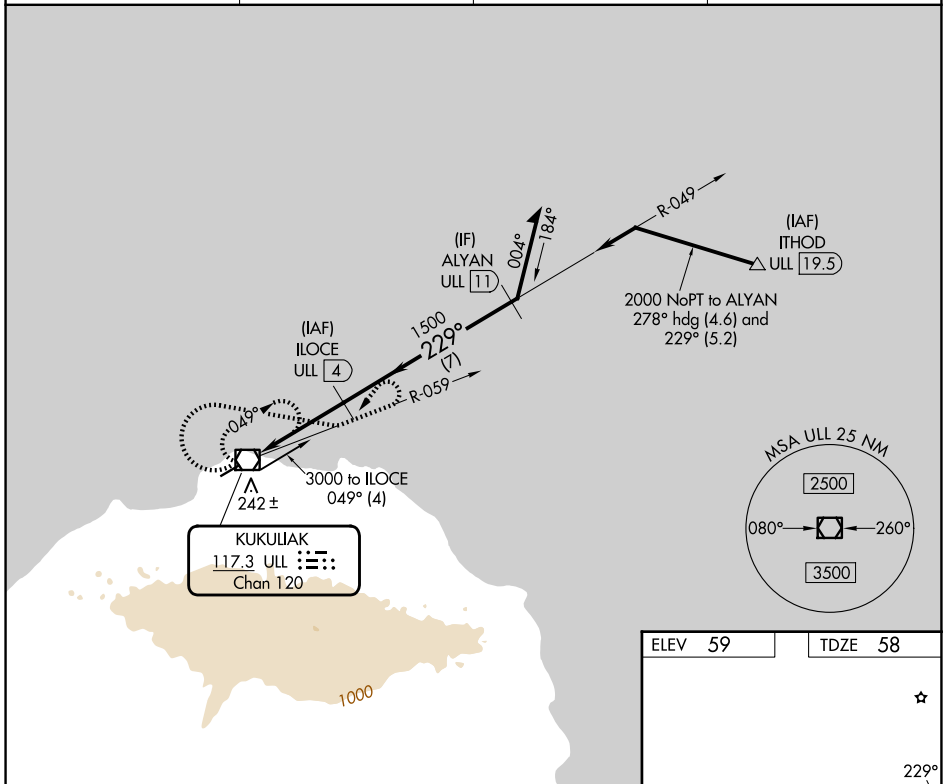
VOR/DME RWY 23

SAVOONGA (SVA) (PASA)

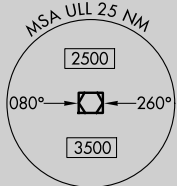
⚠ VDP NA when using GAM/PAGM altimeter setting. Circling NA southeast of Rwy 5-23. When local altimeter setting not received, use GAM/PAGM altimeter setting and increase all MDAs 100 feet; increase S-23 Cat C/D visibility ¼ SM and Circling Cat C visibility ½ SM.

MISSED APPROACH: Climbing right turn to 3300 on heading 090° and on ULL VOR/DME R-059 then left turn on ULL VOR/DME R-059 to ULL VOR/DME and hold.

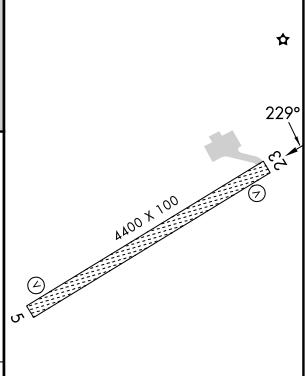
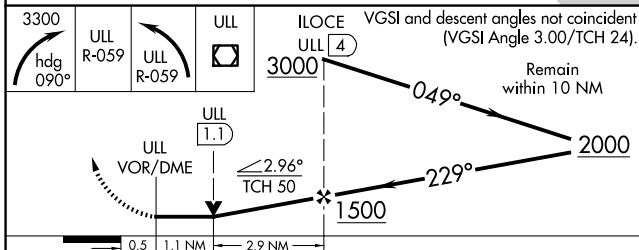
AWOS-3P 121.3	ANCHORAGE CENTER 132.2 281.4	NOME RADIO 122.3	CTAF 122.7
-------------------------	--	----------------------------	----------------------



KUKULIAK
117.3 ULL
Chan 120



ELEV 59	TDZE 58
---------	---------



CATEGORY	A	B	C	D
S-23	600-1	542 (600-1)	600-1½ 542 (600-1½)	600-1¾ 542 (600-1¾)
CIRCLING	600-1	541 (600-1)	780-2 721 (800-2)	1160-3 1101 (1200-3)

MIRL Rwy 5-23