

APP CRS	Rwy Ldg	2805
346°	TDZE	208
	Apt Elev	208

RNAV (GPS) RWY 34

LINCOLN RGNL (L.R.G)

RNP APCH - GPS.

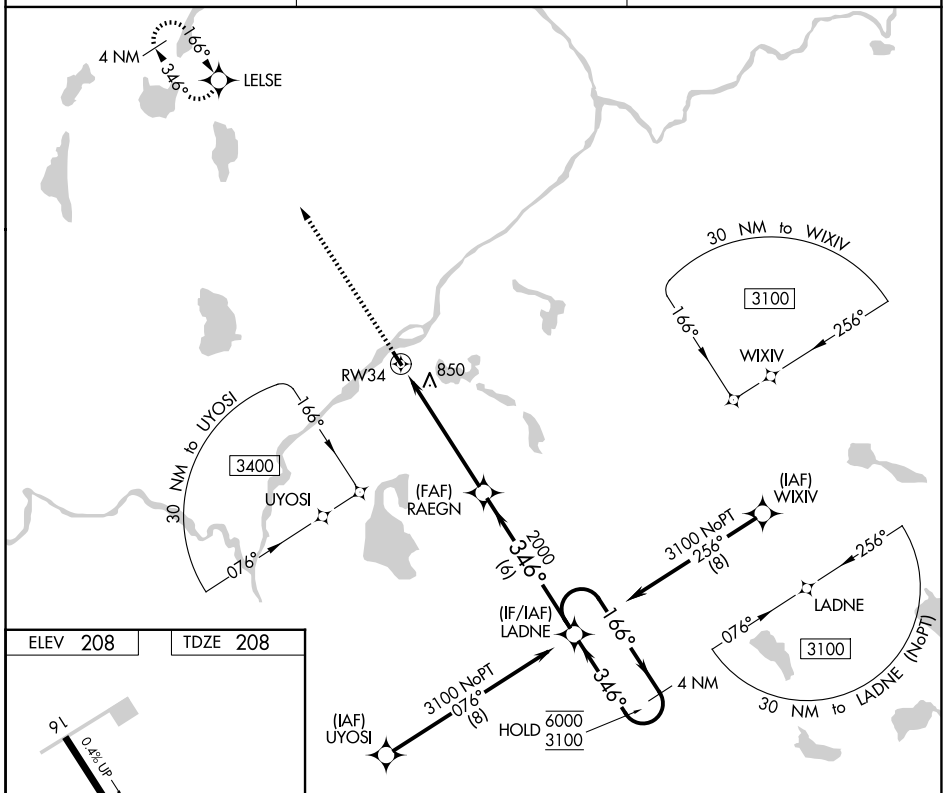
▼ NA Procedure NA at night. Rwy 34 helicopter visibility reduction below 1 SM NA.
 ▲ NA Circling NA to Rwy's 6W and 24W. Use MLT altimeter setting; when not received, use BGR altimeter setting and increase all MDAs 20 feet.

MISSED APPROACH:
 Climb to 2800 direct LEISE and hold.

MLT ASOS
135.225

BOSTON CENTER
124.25 290.5

UNICOM
122.8 (CTAF) 0



ELEV 208	TDZE 208
----------	----------

WATER RWY: 06W - 24W
 2400 X 100

MIRL Rwy 16-34 0
 REIL Rwy's 16 and 34 0

2800	LEISE	Visual Segment - Obstacles.	LADNE	4 NM
↑	✧			Holding Pattern
		RAEGN		
		RWY34		
		2000		
		5.5 NM	6 NM	
CATEGORY	A	B	C	D
LNAV MDA	1180-1¼ 972 (1000-1¼)	1180-1½ 972 (1000-1½)		NA
CIRCLING	1240-1¼ 1032 (1100-1¼)	1240-1½ 1032 (1100-1½)		NA

NE-1, 14 MAY 2026 to 11 JUN 2026

NE-1, 14 MAY 2026 to 11 JUN 2026