

LOC/DME I-JVW 108.55 Chan 22(Y)	APP CRS 124°	Rwy Ldg TDZE 241 Apt Elev 247
--	------------------------	---

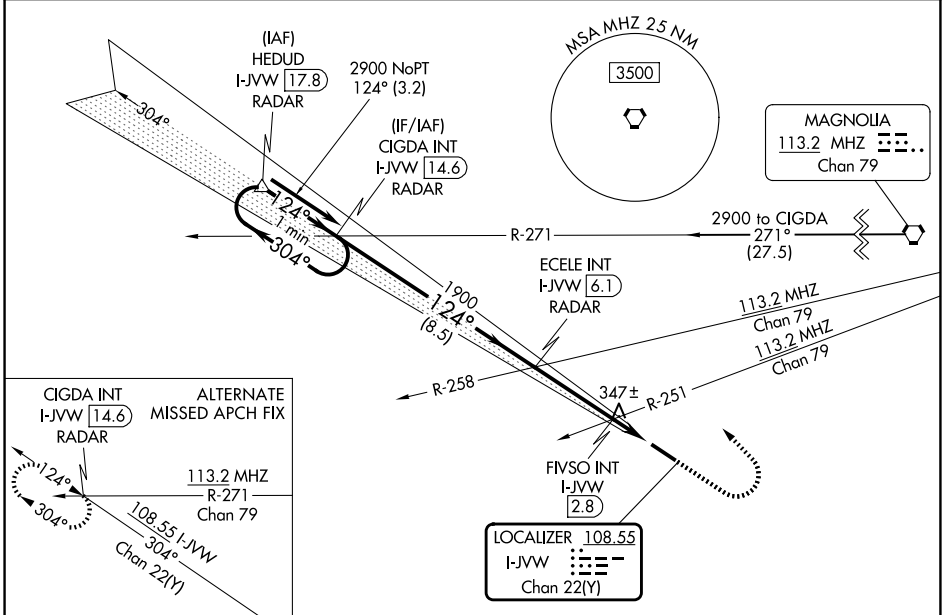
ILS or LOC RWY 12

JOHN BELL WILLIAMS (JVW)

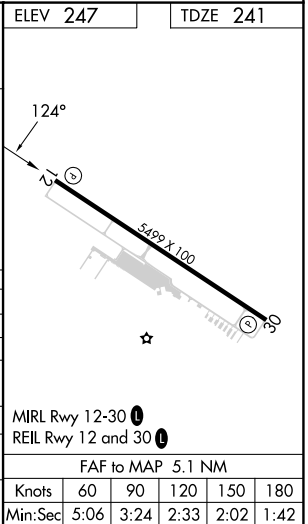
▼ VDP NA with Hawkins Fld altimeter setting. Circling NA for Cat D southwest of Rwy 12-30.
▲ When local altimeter setting not received, use Hawkins Fld altimeter setting: increase all DA 36 feet, all MDA 40 feet, S-LOC 12 Cat C and D visibilities ¼ mile, and Circling Cat C and D visibilities ¼ mile, increase FIVSO fix minimums S-LOC 12 Cat C and D visibilities ¼ mile and Circling Cat C and D visibilities ¼ mile.

MISSED APPROACH: Climb to 800 then climbing left turn to 2900 on heading 316° and on MHz VORTAC R-271 to CIGDA INT/I-JVW 14.6 DME and hold.

AWOS-3PT 118.675	JACKSON APP CON ★ 125.25 319.2	UNICOM 123.0 (CTAF) ①
----------------------------	--	---------------------------------



One Minute Holding Pattern	CIGDA INT I-JVW (14.6) RADAR	ECELE INT I-JVW (6.1) RADAR	FIVSO INT I-JVW (2.8)	I-JVW (1.1)	ELEV 247	TDZE 241
2900 ← 304° 124° →	GS 3.00° TCH 47	1900	*760	*800 when using Hawkins Fld altimeter setting.	*LOC only	
VGSI and ILS glidepath not coincident (VGSI Angle 3.00/TCH 38).	8.5 NM	3.4	0.5	1.2	hdg 316°	
CATEGORY	A	B	C	D		
S-ILS 12	441- ³ / ₄		200 (200- ³ / ₄)			
S-LOC 12	760-1	519 (600-1)	760- ¹ / ₈	519 (600- ¹ / ₈)		
CIRCLING	800-1	553 (600-1)	980-2	980-2 ¼		
FIVSO FIX MINIMUMS (DUAL VOR RECEIVERS OR DME REQUIRED)						
S-LOC 12	660-1	419 (500-1)	660- ¹ / ₈	419 (500- ¹ / ₈)		
CIRCLING	800-1	553 (600-1)	980-2	980-2 ¼		



SC-4, 14 MAY 2026 to 11 JUN 2026

SC-4, 14 MAY 2026 to 11 JUN 2026

MIRL Rwy 12-30 ①	REIL Rwy 12 and 30 ①
FAF to MAP 5.1 NM	
Knots	60 90 120 150 180
Min:Sec	5:06 3:24 2:33 2:02 1:42