

WAAS CH 78034 W30A	APP CRS 304°	Rwy Ldg 5499 TDZE 247 Apt Elev 247
---------------------------------	------------------------	---

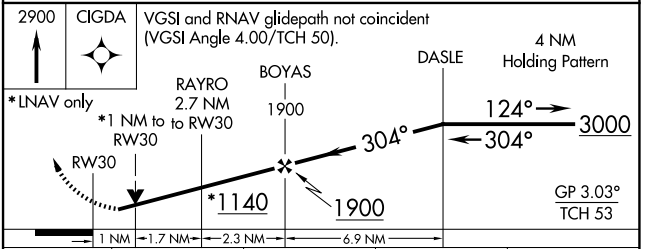
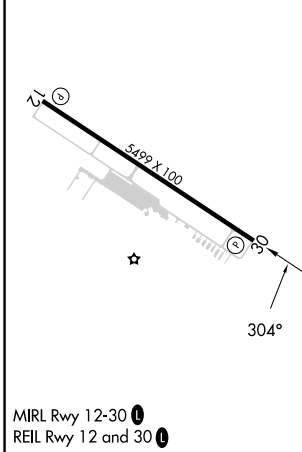
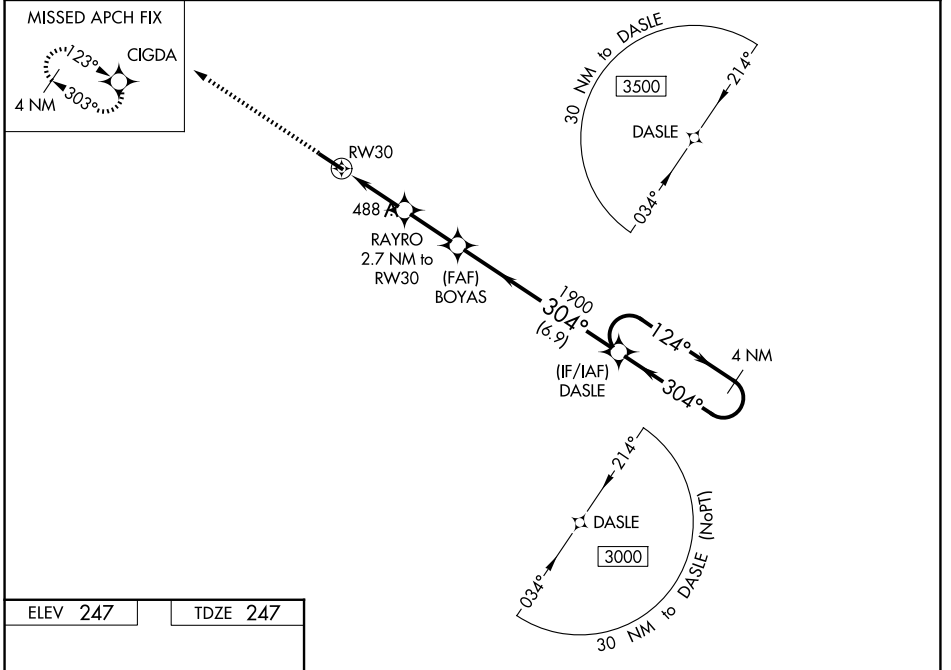
RNAV (GPS) RWY 30

JOHN BELL WILLIAMS (JVW)

⚠ For uncompensated Baro-VNAV systems, LNAV/VNAV NA below -15°C (5°F) or above 54°C (130°F). DME/DME RNP-0.3 NA. Circling NA for Cat D southwest of Rwy 12-30. Helicopter visibility reduction below ¼ SM NA. When local altimeter setting not received, use Hawkins Fld altimeter setting increase all DA/MDA 40 feet, increase LPV and LNAV/VNAV all Cats visibility and LNAV Cat C/D visibility ½ mile, increase Circling Cat C visibility ¼ mile. Baro-VNAV and VDP NA when using Hawkins Fld altimeter setting.

MISSED APPROACH:
Climb to 2900 direct CIGDA and hold.

AWOS-3PT 118.675	JACKSON APP CON ★ 125.25 319.2	UNICOM 123.0 (CTAF) 0
----------------------------	--	---------------------------------



CATEGORY	A	B	C	D
LPV DA		513-7/8	266 (300-7/8)	
LNAV/VNAV DA		699-1½	452 (500-1½)	
LNAV MDA	740-1	493 (500-1)	740-1¾	493 (500-1¾)
CIRCLING	740-1 493 (500-1)	760-1 513 (600-1)	980-2 733 (800-2)	980-2¼ 733 (800-2¼)

SC-4, 14 MAY 2026 to 11 JUN 2026

SC-4, 14 MAY 2026 to 11 JUN 2026