

| | | | |
|--|------------------------|-----------------------------|---|
| WAAS CH 99535 W36A | APP CRS 002° | Rwy Ldg TDZE Apt Elev | 3197 337 337 |
|--|------------------------|-----------------------------|---|

RNAV (GPS) RWY 36
OKOLONA MUNI/RICHARD STOVALL FLD (5A4)

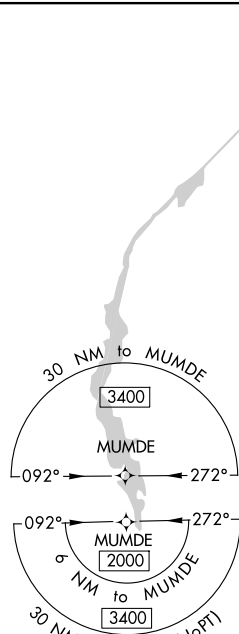
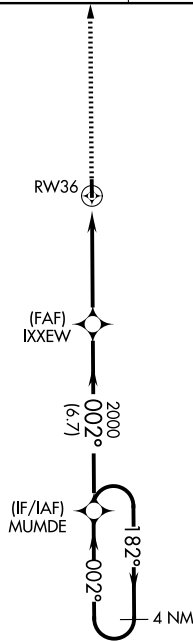
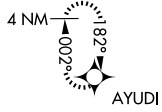
Baro-VNAV NA. DME/DME RNP-0.3 NA. Use Tupelo altimeter setting; when not received, use Columbus Air Force Base altimeter setting and increase all DA 41 feet and all MDA 60 feet; increase LNAV/VNAV all Cats visibility ¼ mile and LNAV Cat C visibility ¼ mile.
Rwy 36 helicopter visibility reduction below ¾ SM NA.

MISSED APPROACH:
Climb to 2600 direct AYUDI and hold.

COLUMBUS APP CON ★
126.075 229.15

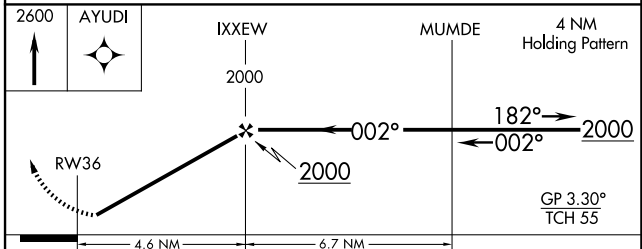
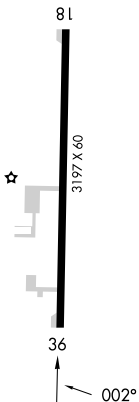
CTAF
122.9 0

MISSED APCH FIX



| | |
|----------|----------|
| ELEV 337 | TDZE 337 |
|----------|----------|

MIRL Rwy 18-36 0



| CATEGORY | A | B | C | D |
|--------------|---------------------|-------------|-------------------------|----|
| LPV DA | 624-1 287 (300-1) | | | NA |
| LNAV/VNAV DA | 732-1½ 395 (400-1½) | | | NA |
| LNAV MDA | 860-1 | 523 (600-1) | 860-1½ 523 (600-1½) | NA |
| CIRCLING | 920-1 | 583 (600-1) | 1080-2¼ 743 (800-2¼) | NA |