

VORTAC BIL <b>114.5</b> Chan 92	APP CRS <b>208°</b>	Rwy Ldg TDZE Apt Elev	<b>5199</b> <b>3472</b> <b>3543</b>
---------------------------------------	------------------------	-----------------------------	---

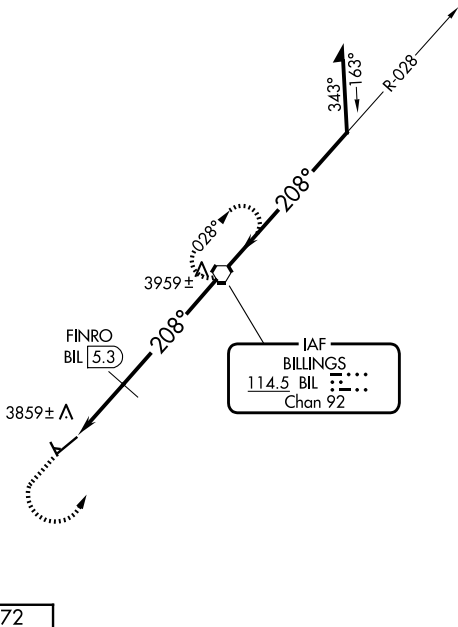
# VOR RWY 22

LAUREL MUNI (6S8)

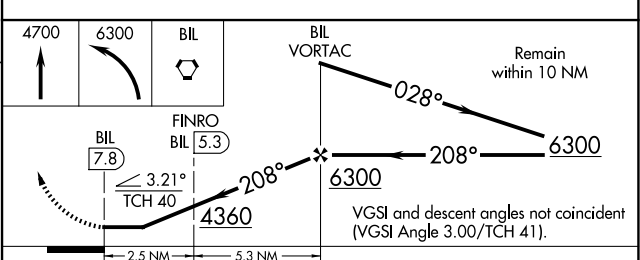
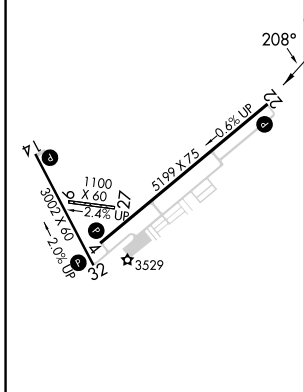
**⚠** When local altimeter setting not received, use Billings altimeter setting: increase Circling Cats C and D MDAs 60 feet and Circling Cat C visibility ¼ SM; FINRO fix minimums: increase Circling Cats C and D MDAs 60 feet and Circling Cat C visibility ¼ SM. Rwy 22 helicopter visibility reduction below ¼ SM NA. Circling NA to Rwy 9 and 27. Circling Rwy 14, 32 NA at night.

**MISSED APPROACH:** Climb to 4700 then climbing left turn to 6300 direct BIL VORTAC and hold.

AWOS-3 <b>135.05</b>	BILLINGS APP CON <b>119.2 120.5 284.6</b>	AUNICOM <b>123.05 (CTAF) ①</b>
-------------------------	--	-----------------------------------



ELEV 3543	TDZE 3472
-----------	-----------



CATEGORY	A	B	C	D
S-22	4360-1¼ 888 (900-1¼)		4360-2¾ 888 (900-2¾)	4360-3 888 (900-3)
CIRCLING	4360-1¼ 817 (900-1¼)		4460-2¾ 917 (1000-2¾)	4560-3 1017 (1100-3)
FINRO FIX MINIMUMS				
S-22	4160-1 688 (700-1)		4160-2 688 (700-2)	4160-2¼ 688 (700-2¼)
CIRCLING	4220-1 677 (700-1)		4460-2¾ 917 (1000-2¾)	4560-3 1017 (1100-3)

MIRL Rwy 4-22 and 14-32 ①

FAF to MAP 7.8 NM

Knots	60	90	120	150	180
Min:Sec	7:48	5:12	3:54	3:07	2:36

NW-1, 14 MAY 2026 to 11 JUN 2026

NW-1, 14 MAY 2026 to 11 JUN 2026