

WAAS CH <b>97734</b> <b>W36A</b>	APP CRS <b>357°</b>	Rwy Ldg TDZE Apt Elev	<b>4100</b> <b>1151</b> <b>1153</b>
--	------------------------	-----------------------------	---

# RNAV (GPS) RWY 36

ABILENE MUNI (K78)

RNP APCH - GPS.

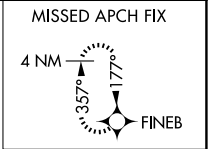
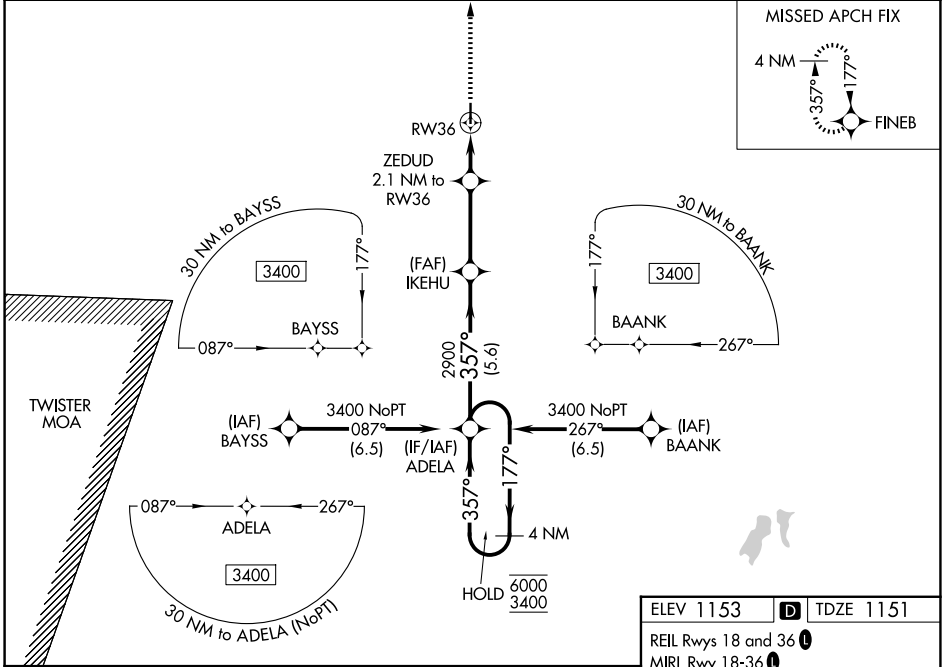
▼ For uncompensated Baro-VNAV systems, procedure NA below -17°C or above 54°C.  
 ▲ NA Baro-VNAV and VDP NA when using SLN altimeter setting. When local altimeter setting not received, use SLN altimeter setting; increase LPV DA to 1468 feet; increase LNAV/VNAV DA to 1667 feet; increase all MDAs 80 feet and LNAV visibility Cat C ½ SM, and Circling visibility Cat C ¼ SM.

MISSED APPROACH: Climb to 3400 direct FINEB and hold.

AWOS-3P  
**124.125**

MARSHALL AAF GCA\*  
**121.25 269.05**

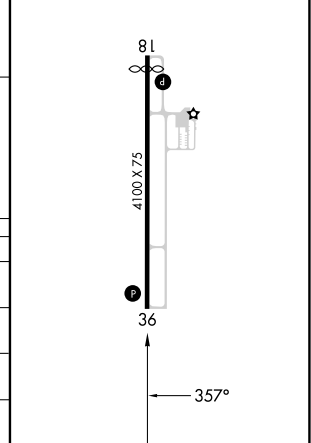
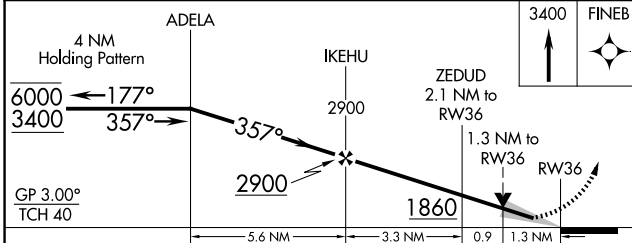
UNICOM  
**122.8 (CTAF)**



NC-2, 14 MAY 2026 to 11 JUN 2026

NC-2, 14 MAY 2026 to 11 JUN 2026

ELEV 1153 TDZE 1151  
 REIL Rwy 18 and 36  
 MIRL Rwy 18-36



CATEGORY	A	B	C	D
LPV DA	1401-1 250 (300-1)			NA
LNAV/VNAV DA	1600-1 <sup>3</sup> / <sub>8</sub> 449 (500-1 <sup>3</sup> / <sub>8</sub> )			NA
LNAV MDA	1600-1 449 (500-1)	1600-1 <sup>3</sup> / <sub>8</sub> 449 (500-1 <sup>3</sup> / <sub>8</sub> )		NA
CIRCLING	1680-1 527 (600-1)	1900-2 <sup>1</sup> / <sub>4</sub> 747 (800-2 <sup>1</sup> / <sub>4</sub> )		NA