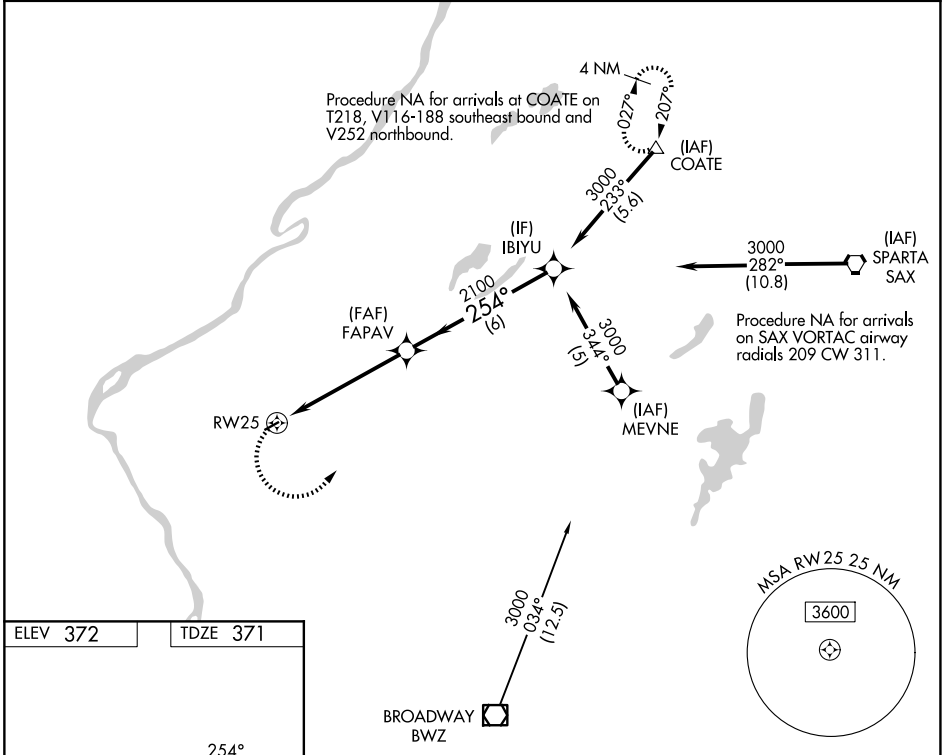


APP CRS 254°	Rwy Ldg TDZE Apt Elev	2877 371 372
------------------------	-----------------------------	---

RNAV (GPS) RWY 25

BLAIRSTOWN (1N7)

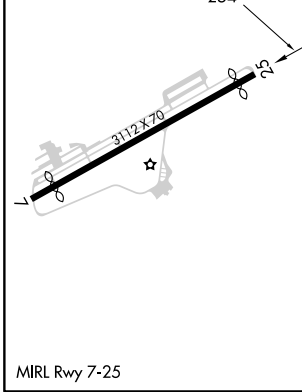
RNP APCH.		MISSED APPROACH: Climbing left turn to 3000 direct COATE and hold.
<p>▽ Procedure NA at night. Obtain local altimeter setting on CTAF; when not received, use Lehigh Valley Intl altimeter setting. Rwy 25 helicopter visibility reduction below 1 SM NA.</p> <p>▲ NA</p>		
NEWARK APP CON 123.775 379.9 (EAST)	ALLENTOWN APP CON 124.45 351.8 (WEST)	UNICOM 123.0 (CTAF)



NE-2, 14 MAY 2026 to 11 JUN 2026

NE-2, 14 MAY 2026 to 11 JUN 2026

ELEV 372	TDZE 371
----------	----------



3000	COATE	Visual Segment - Obstacles.	
	△		
		FAPAV	IBIYU
		2100	3000
		5.3 NM	6 NM
CATEGORY	A	B	C D
LNAV MDA	1260-1¼	889 (900-1¼)	NA
LEHIGH VALLEY INTL ALTIMETER SETTING MINIMUMS			
LNAV MDA	1540-1¼ 1169 (1200-1¼)	1540-1½ 1169 (1200-1½)	NA