

WAAS CH <b>70746</b> <b>W13A</b>	APP CRS <b>127°</b>	Rwy Idg TDZE Apt Elev	<b>6350</b> <b>215</b> <b>231</b>
--	------------------------	-----------------------------	---

# RNAV (GPS) RWY 13

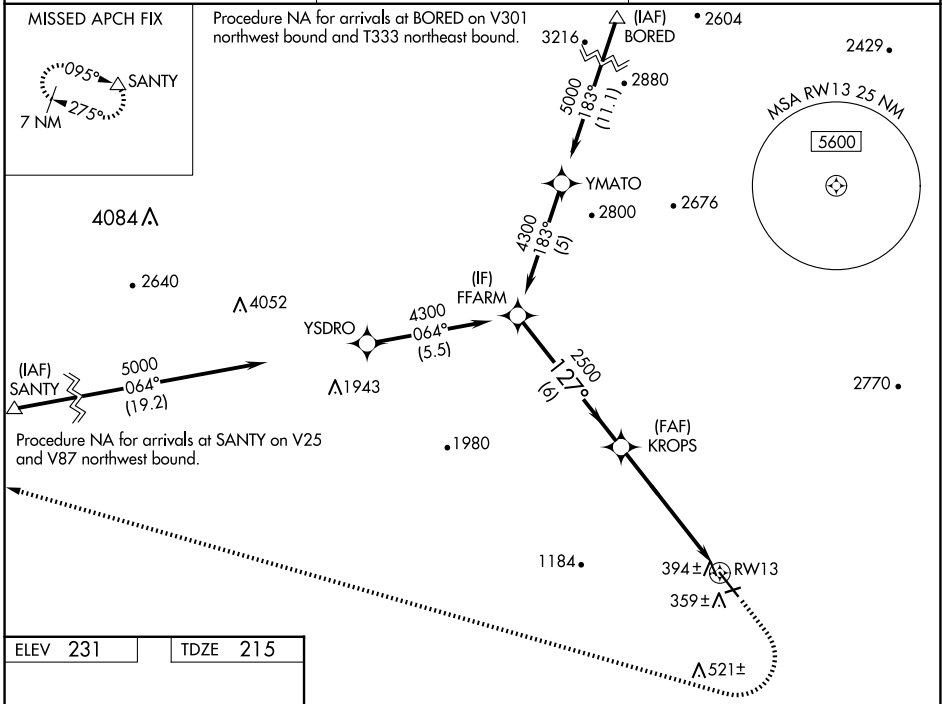
HOLLISTER MUNI (CVH)

RNP APCH - GPS.

**▽** For uncompensated Baro-VNAV systems,  
**▲** LNAV/VNAV NA below -15°C or above 54°C.

MISSED APPROACH: (Do not exceed 200 KIAS until SNTY)  
Climb to 1100 then climbing right turn to 7000 direct SNTY and hold.  
\*Missed approach requires minimum climb of 245 feet per NM to 1900.

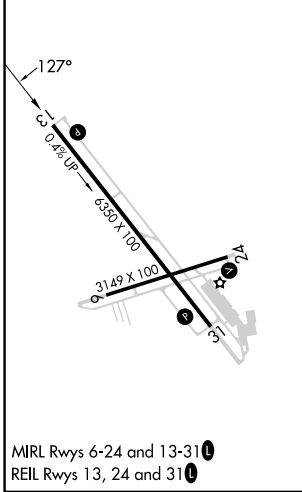
AWOS-3 <b>120.425</b>	NORCAL APP CON <b>124.525 348.675</b>	UNICOM <b>123.0 (CTAF) 0</b>
--------------------------	--	---------------------------------



SW-2, 14 MAY 2026 to 11 JUN 2026

SW-2, 14 MAY 2026 to 11 JUN 2026

ELEV 231	TDZE 215
----------	----------



FFARM	VGSI and RNAV glidepath not coincident (VGSI Angle 3.00/TCH 44).	1100	7000	SNTY
4300	KROPS	2500	1.9 NM to RW13	RW13
GP 3.70°	2500			
TCH 44	6 NM	3.9 NM	1.9 NM	
CATEGORY	A	B	C	D
LPV DA	535-7/8	320 (400-7/8)		NA
LNAV/VNAV DA	1055-2 1/2	840 (900-2 1/2)		NA
LNAV/VNAV DA*	564-1	349 (400-1)		NA
LNAV MDA	840-1	625 (700-1)	840-1 3/4 625 (700-1 3/4)	NA