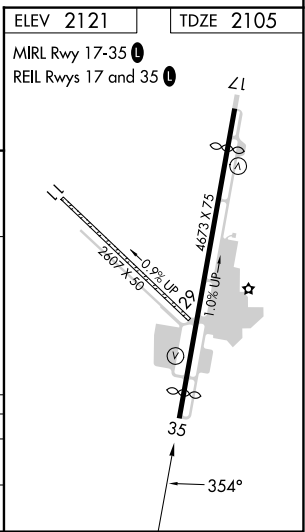
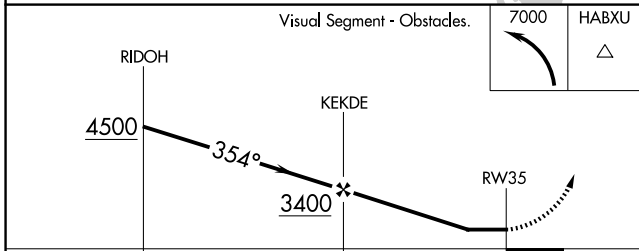
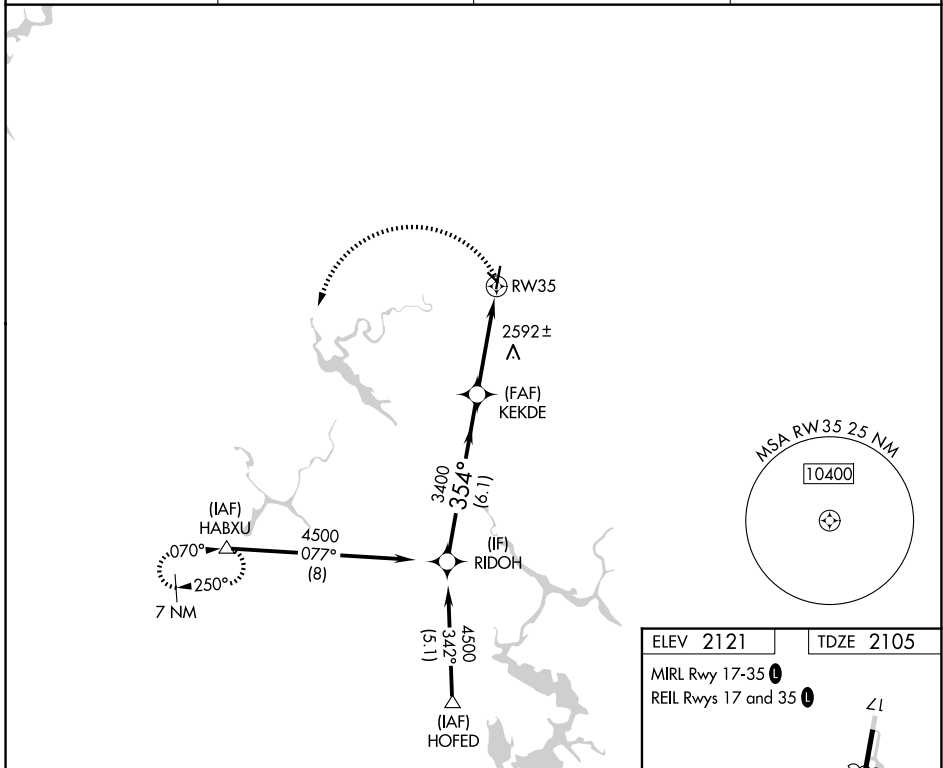


APP CRS	Rwy Ldg	<b>4289</b>
<b>354°</b>	TDZE	<b>2105</b>
	Apt Elev	<b>2121</b>

# RNAV (GPS) RWY 35

COLUMBIA (O22)

RNP APCH.		MISSED APPROACH: Climbing left turn to 7000 direct HABXU and hold, continue climb-in-hold to 7000.	
<p><b>▼</b> Circling NA to Rwy 11 and 29. Circling NA east of Rwy 17-35. Procedure NA at night. Rwy 35 helicopter visibility reduction below 1 SM NA.</p>			
AWOS-3	NORCAL APP CON	OAKLAND CENTER	UNICOM
<b>124.65</b>	<b>125.1 363.2 (N/W)</b>	<b>121.25 327.0 (E/S)</b>	<b>122.975 (CTAF) ①</b>



CATEGORY	A	B	C	D
LNVA MDA	3140-1¼ 1035 (1100-1¼)	3140-1½ 1035 (1100-1½)	3140-3 1035 (1100-3)	NA
CIRCLING	3140-1¼ 1019 (1100-1¼)	3140-1½ 1019 (1100-1½)	3140-3 1019 (1100-3)	NA

SW-2, 14 MAY 2026 to 11 JUN 2026

SW-2, 14 MAY 2026 to 11 JUN 2026