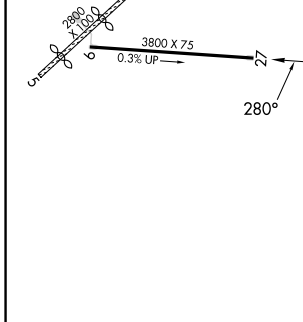
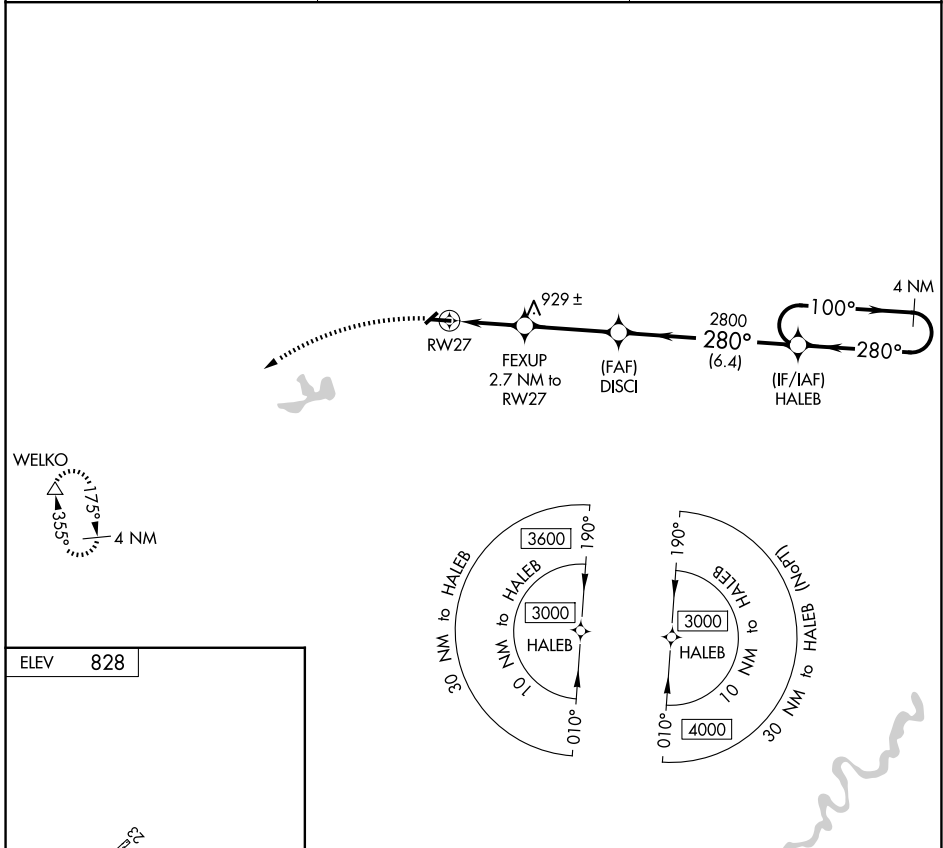


APP CRS	Rwy Ldg	N/A
280°	TDZE	N/A
	Apt Elev	828

RNAV (GPS)-A

BALDWIN MUNI (7D3)

<p>▼ Circling NA to Rws 5 and 23. DME/DME RNP-0.3 NA. ▲ NA Helicopter visibility reduction below 1 SM NA. Use Fremont Muni altimeter setting. Procedure NA at night.</p>	<p>MISSED APPROACH: Climbing left turn to 3600 direct WELKO and hold.</p>	
<p>FFX AWOS-3 118.775</p>	<p>MINNEAPOLIS CENTER 120.85 322.35</p>	<p>CTAF 122.9</p>



3600	WELKO	4 NM Holding Pattern		
FEXUP 2.7 NM to RW27	DISCI	HALEB		
1720	2800	3000		
2.7 NM	3.4 NM	6.4 NM		
CATEGORY	A	B	C	D
CIRCLING	1400-1	572 (600-1)	1400-1½ 572 (600-1½)	NA

EC-1, 14 MAY 2026 to 11 JUN 2026

EC-1, 14 MAY 2026 to 11 JUN 2026