

LOC/DME I-JUH	APP CRS	Rwy Ldg TDZE	5002 3142
109.35	276°	Apt Elev	3178
Chan 30(Y)			

# LOC RWY 28

ASHE COUNTY (GEV)

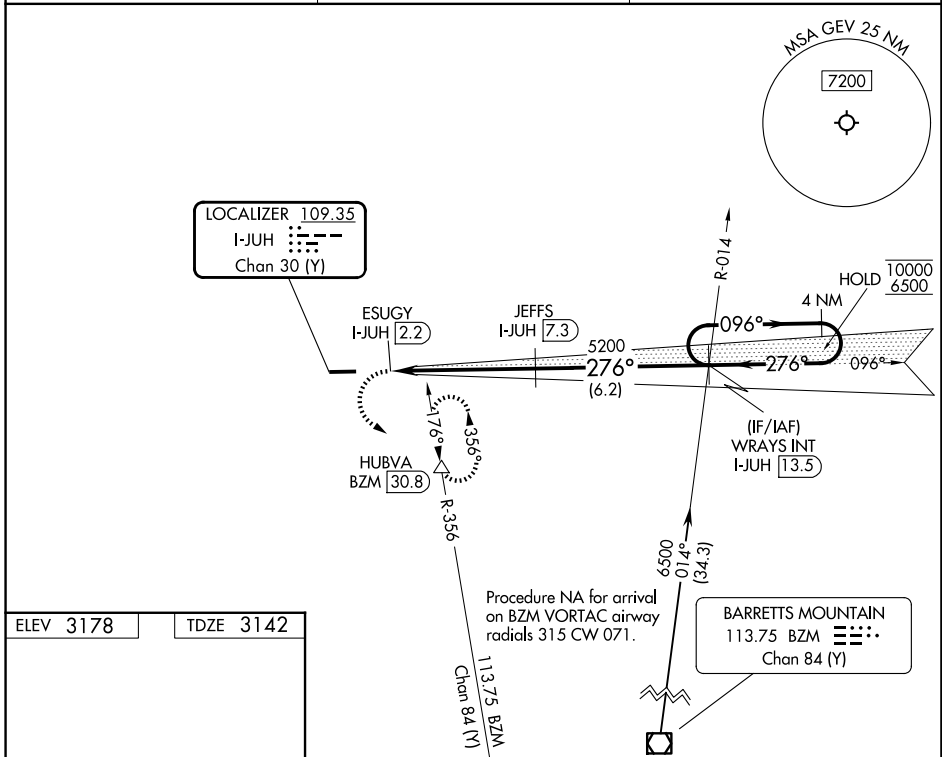
DME required.

▼ Circling to Rwy 10 NA at night.

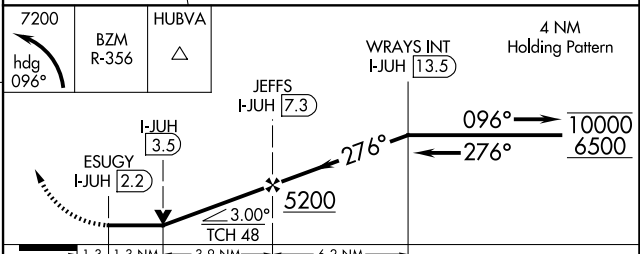
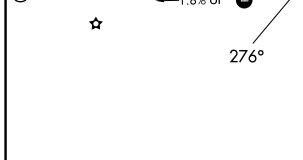
⚠ -16°C

MISSED APPROACH: Climbing left turn to 7200 on heading 096° and on BZM VOR/DME R-356 to HUBVA/BZM 30.8 DME and hold, continue climb-in-hold to 7200.

AWOS-3 120.675	ATLANTA CENTER 125.15 263.0	UNICOM 122.8 (CTAF) 0
-------------------	--------------------------------	--------------------------



ELEV 3178	TDZE 3142
-----------	-----------



CATEGORY	A	B	C	D
S-LOC 28	3980-1½	838 (900-1½)	3980-2½	838 (900-2½)
CIRCLING	4280-1½	1102 (1200-1½)	5140-3 1962 (2000-3)	5180-3 2002 (2100-3)

SE-2, 14 MAY 2026 to 11 JUN 2026

SE-2, 14 MAY 2026 to 11 JUN 2026