

WAAS CH 70437 W28A	APP CRS 276°	Rwy Ldg TDZE Apt Elev	5002 3142 3178
--	------------------------	-----------------------------	---

RNAV (GPS) RWY 28

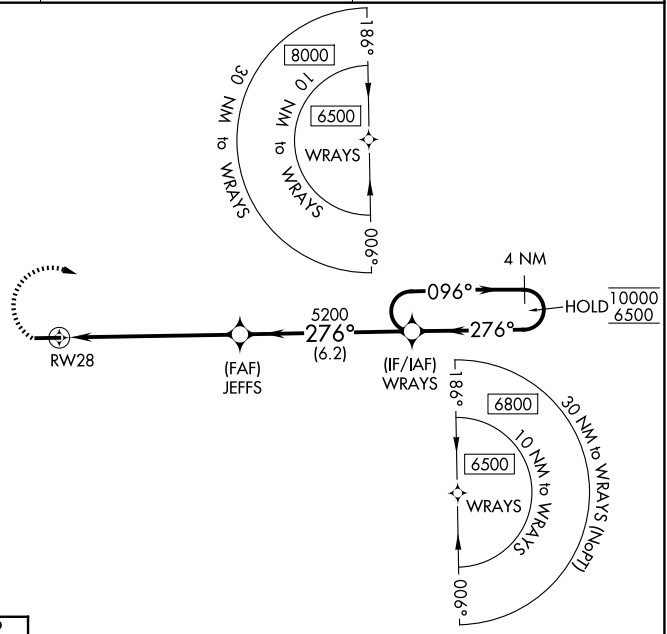
ASHE COUNTY (GEV)

RNP APCH - GPS.

⚠ Circling to Rwy 10 NA at night. For uncompensated Baro-VNAV systems, LNAV/VNAV NA below 14°C or above 54°C.
❄ -16°C

MISSED APPROACH: Climbing right turn to 6500 direct WRAYS and hold, continue climb-in-hold to 6500.
 *Missed approach requires minimum climb of 350 feet per NM to 5700.

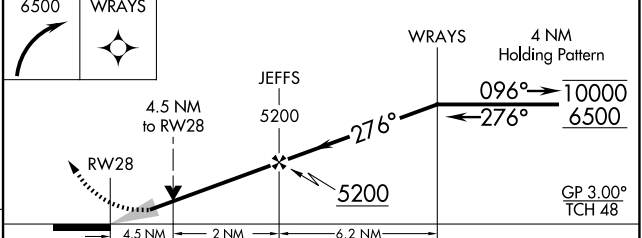
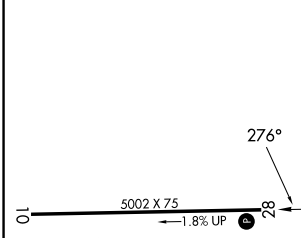
AWOS-3 120.675	ATLANTA CENTER 125.15 263.0	UNICOM 122.8 (CTAF) ①
--------------------------	---------------------------------------	---------------------------------



SE-2, 14 MAY 2026 to 11 JUN 2026

SE-2, 14 MAY 2026 to 11 JUN 2026

ELEV 3178	TDZE 3142
-----------	-----------



CATEGORY	A	B	C	D
LPV DA*		3799-1 $\frac{1}{8}$	657 (700-1 $\frac{1}{8}$)	
LPV DA		4052-4	910 (900-4)	
LNAV/VNAV DA		4024-4	882 (900-4)	
LNAV MDA	4560-1 $\frac{1}{4}$ 1418 (1400-1 $\frac{1}{4}$)	4560-1 $\frac{1}{2}$ 1418 (1400-1 $\frac{1}{2}$)	4560-3	1418 (1400-3)
CIRCLING	4560-1 $\frac{1}{4}$ 1382 (1400-1 $\frac{1}{4}$)	4560-1 $\frac{1}{2}$ 1382 (1400-1 $\frac{1}{2}$)	5140-3 1962 (2000-3)	5180-3 2002 (2100-3)

REIL Rwy 28 ①
 MIRL Rwy 10-28 ①