

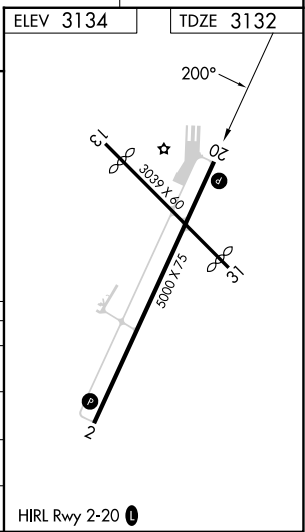
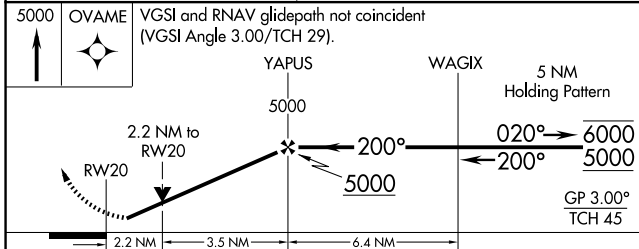
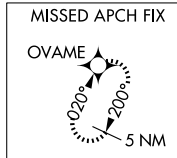
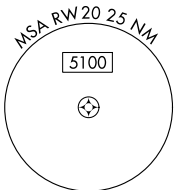
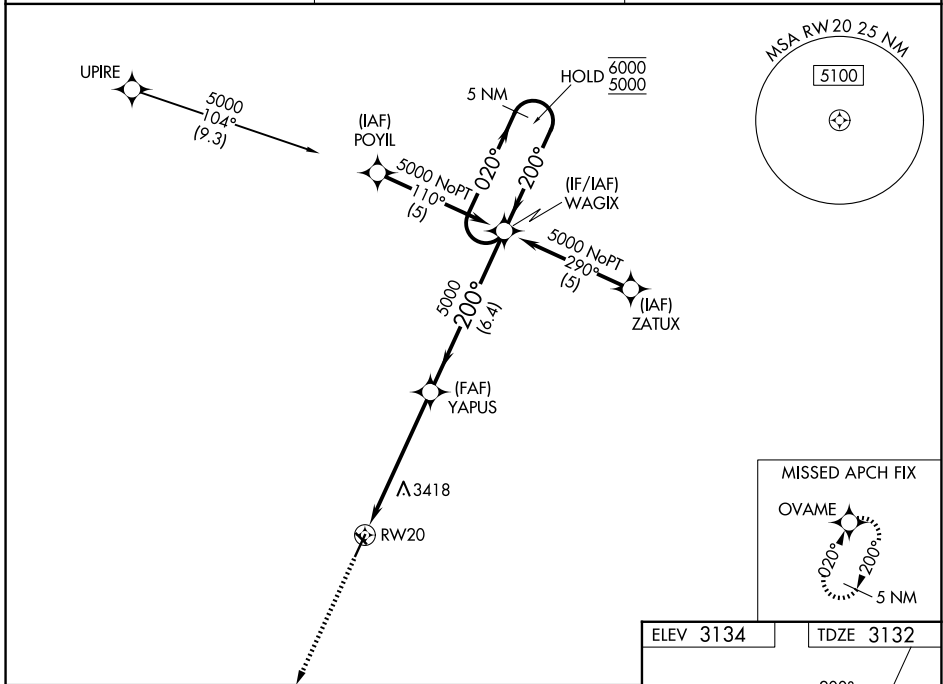
WAAS CH <b>86603</b> <b>W20A</b>	APP CRS <b>200°</b>	Rwy Ldg <b>5000</b>
		TDZE <b>3132</b>
		Apt Elev <b>3134</b>

# RNAV (GPS) RWY 20

HUGOTON MUNI (HQQ)

RNP APCH-GPS.	MISSED APPROACH: Climb to 5000 direct OVAME and hold.
<p><b>⚠</b> Circling Rwy 13, 31 NA at night. Rwy 20 helicopter visibility reduction below 3/4 SM NA. For uncompensated Baro-VNAV systems, procedure NA below -21°C or above 54°C.</p>	

AWOS-3PT <b>118.6</b>	KANSAS CITY CENTER <b>134.0 257.625</b>	UNICOM <b>122.8 (CTAF) 0</b>
--------------------------	--	---------------------------------



CATEGORY	A	B	C	D
LPV DA	3382-1		250 (300-1)	NA
LNAV/VNAV DA	3580-1 3/8		448 (500-1 3/8)	NA
LNAV MDA	3860-1	728 (800-1)	3860-2 728 (800-2)	NA
CIRCLING	3860-1	726 (800-1)	3980-2 1/2 846 (900-2 1/2)	NA

NC-2, 14 MAY 2026 to 11 JUN 2026

NC-2, 14 MAY 2026 to 11 JUN 2026