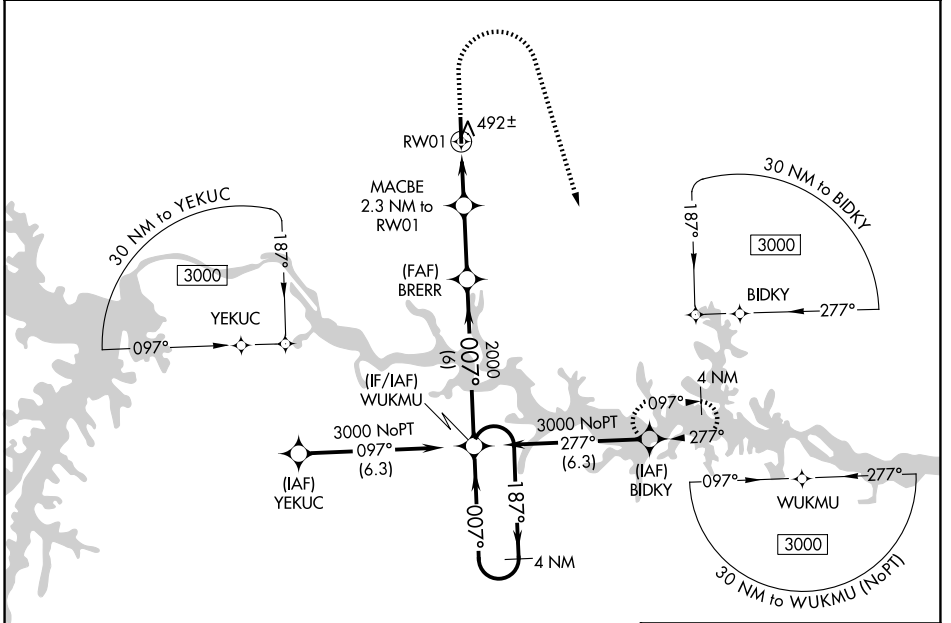


WAAS CH 63118 W01A	APP CRS 007°	Rwy Ldg TDZE 417 Apt Elev 441
--	------------------------	---

RNAV (GPS) RWY 1

MECKLENBURG-BRUNSWICK RGNL (A/C)

<p>▼ For uncompensated Baro-VNAV systems, LNAV/VNAV NA below -15°C (5°F) or above 54°C (130°F). DME/DME RNP-0.3 NA. Rwy 1 helicopter visibility reduction below ¾ SM NA. For inop ALS, increase LPV all visibility to 1½ SM.</p>	<p>ODALS</p>	<p>MISSED APPROACH: Climb to 900 then climbing right turn to 3000 direct BIDKY and hold.</p>
<p>AWOS-3 127.525</p>	<p>WASHINGTON CENTER 118.75 377.1</p>	<p>UNICOM 122.8 (CTAF) 0</p>



NE-3, 14 MAY 2026 to 11 JUN 2026

NE-3, 14 MAY 2026 to 11 JUN 2026

		ELEV 441	TDZE 417
4 NM Holding Pattern		<p>VGSI and RNAV glidepath not coincident (VGSI Angle 3.00/TCH 40).</p> <p>900 3000 BIDKY</p> <p>* LNAV only.</p>	
<p>GP 3.00° TCH 51</p> <p>WUKMU</p> <p>BRERR 2000</p> <p>MACBE 2.3 NM to RW01</p> <p>* 1.1 NM to RW01</p> <p>2000</p> <p>* 1160</p> <p>6 NM 2.6 NM 1.2 NM 1.1 NM</p>			
CATEGORY	A	B	C
LPV DA		714-1	297 (300-1)
LNAV/VNAV DA		692-1	275 (300-1)
LNAV MDA		760-1	343 (400-1)
CIRCLING	860-1 419 (500-1)	900-1 459 (500-1)	1060-1¾ 619 (700-1¾)
			1060-2 619 (700-2)
<p>MIRL Rwy 1-19 0</p> <p>REIL Rws 1 and 19 0</p>			