

WAAS CH 77942 W14A	APP CRS 139°	Rwy Ldg TDZE Apt Elev	5000 3412 3430
--	------------------------	-----------------------------	---

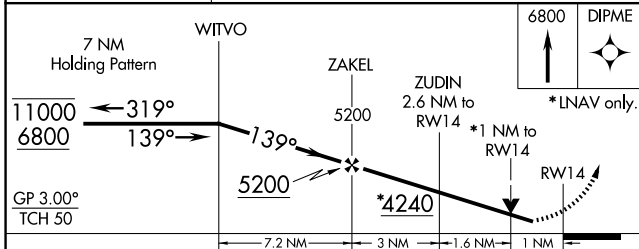
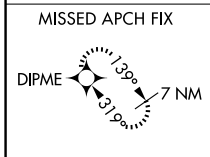
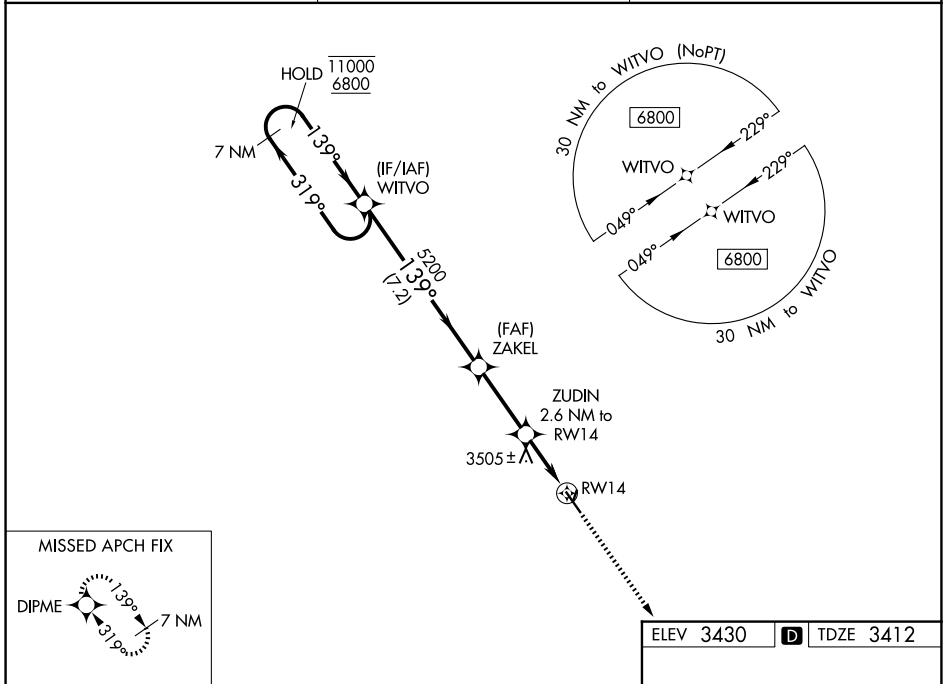
RNAV (GPS) RWY 14

CHEYENNE COUNTY MUNI (SYF)

RNP APCH.
 ▼ Circling NA to Rwys 9, 27, 18 and 36. Rwy 14 helicopter visibility reduction below 3/4 SM NA. For uncompensated Baro-VNAV systems, LNAV/VNAV NA below -21°C or above 54°C.
 ▲

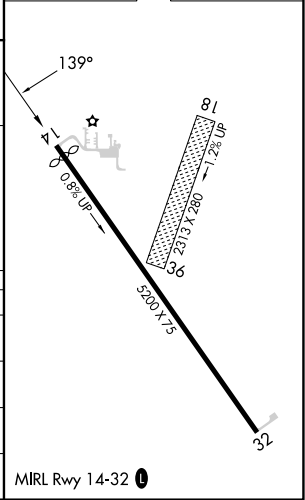
MISSED APPROACH: Climb to 6800 direct DIPME and hold, continue climb-in-hold to 6800.

AWOS-3P 118,925	DENVER CENTER 132.7 226,675	UNICOM 122.8 (CTAF) ①
---------------------------	---------------------------------------	---------------------------------



ELEV 3430	D TDZE 3412
-----------	--------------------

CATEGORY	A	B	C	D
LPV DA	3662-1	250 (300-1)		NA
LNAV/VNAV DA	3662-1	250 (300-1)		NA
LNAV MDA	3760-1	348 (400-1)		NA
CIRCLING	3860-1 430 (500-1)	3880-1 450 (500-1)	3900-1½ 470 (500-1½)	NA



NC-2, 14 MAY 2026 to 11 JUN 2026

NC-2, 14 MAY 2026 to 11 JUN 2026