

WAAS CH 45839 W32A	APP CRS 319°	Rwy Ldg TDZE Apt Elev	5200 3430 3430
--	------------------------	-----------------------------	---

RNAV (GPS) RWY 32

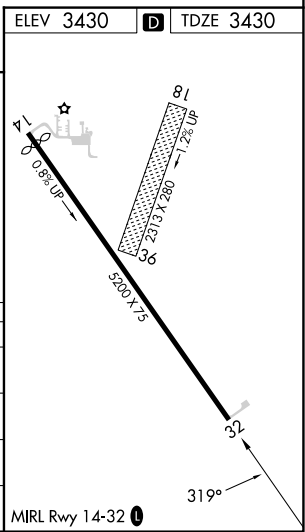
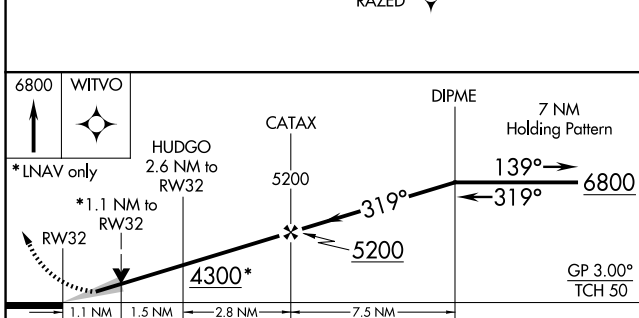
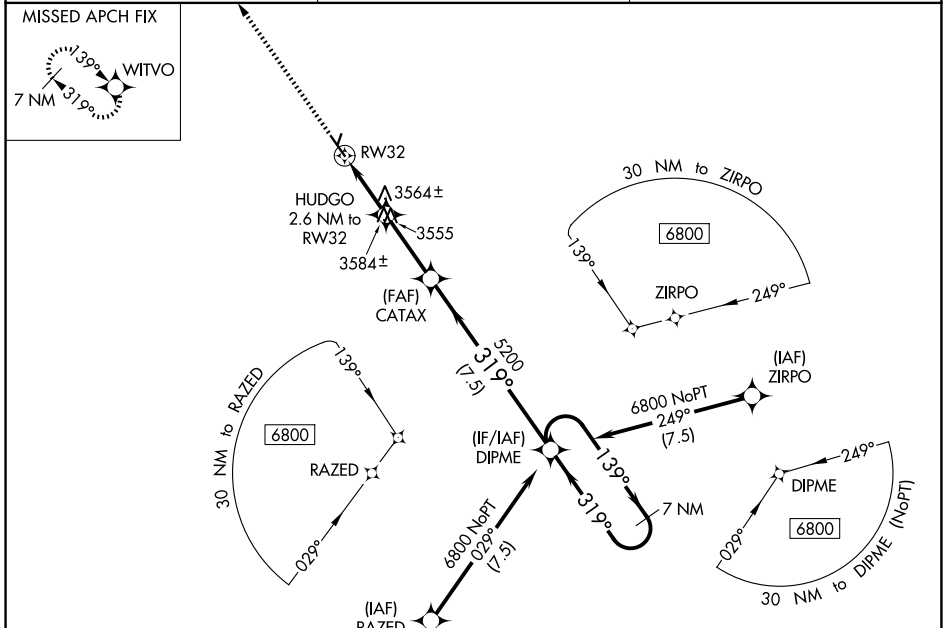
CHEYENNE COUNTY MUNI (SYF)

RNP APCH.

⚠ Circling NA to Rwy 18 and 36. For uncompensated Baro-VNAV systems, LNAV/VNAV NA below -21°C or above 54°C.

⚠ MISSED APPROACH: Climb to 6800 direct WITVO and hold, continue climb-in-hold to 6800.

AWOS-3P 118.925	DENVER CENTER 132.7 226.675	UNICOM 122.8 (CTAF) 0
---------------------------	---------------------------------------	---------------------------------



CATEGORY	A	B	C	D
LPV DA	3680-1	250 (300-1)		NA
LNAV/VNAV DA	3680-1	250 (300-1)		NA
LNAV MDA	3820-1	390 (400-1)	3820-1 ¹ / ₈ 390 (400-1 ¹ / ₈)	NA
CIRCLING	3840-1 410 (500-1)	3880-1 450 (500-1)	3900-1 ¹ / ₂ 470 (500-1 ¹ / ₂)	NA

NC-2, 14 MAY 2026 to 11 JUN 2026

NC-2, 14 MAY 2026 to 11 JUN 2026