

WAAS CH 72921 W17A	APP CRS 174°	Rwy Ldg TDZE Apt Elev	5103 994 1002
---------------------------------	------------------------	-----------------------------	--

RNAV (GPS) RWY 17

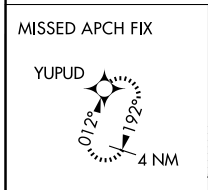
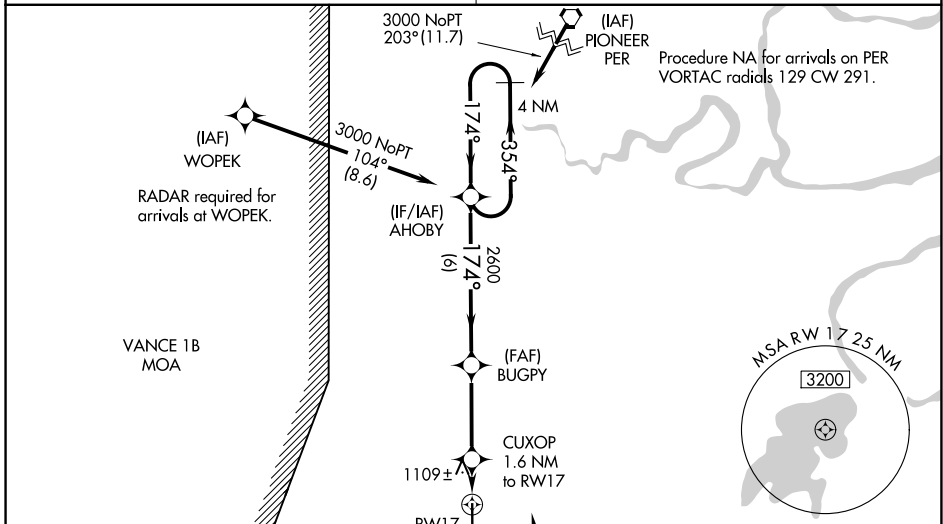
PERRY MUNI (F22)

RNP APCH.

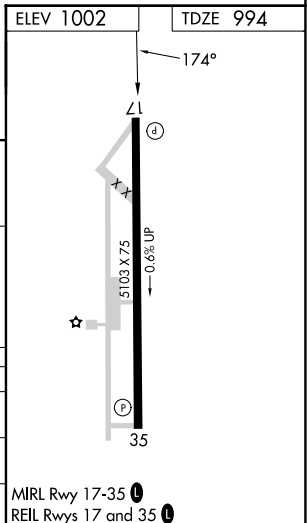
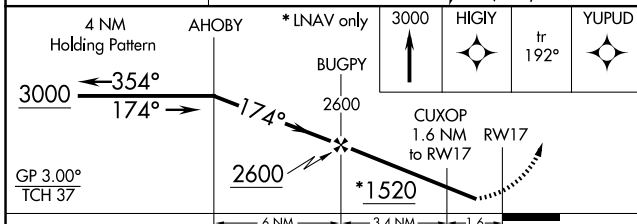
NA Baro-VNAV NA when using KPNC altimeter setting. For uncompensated Baro-VNAV systems, LNAV/VNAV NA below -16°C or above 54°C. When VGSi inop, procedure NA at night. Rwy 17 helicopter visibility reduction below 1 SM NA. Obtain local altimeter setting on CTAF; when not received, use Ponca City altimeter setting and increase all DA 53 feet, all MDA 60 feet and increase LNAV/VNAV all Cats and LNAV Cat C visibility ¼ mile.

MISSED APPROACH: Climb to 3000 direct HIGY and on track 192° to YUPUD and hold.

KANSAS CITY CENTER 127.8 319.1	UNICOM 122.8 (CTAF)
--	-------------------------------



Procedure NA for arrivals at GULLI on V140 eastbound.



CATEGORY	A	B	C	D
LPV DA	1244-1	250 (300-1)		NA
LNAV/VNAV DA	1434-1½	440 (500-1½)		NA
LNAV MDA	1360-1	366 (400-1)	1360-1⅛ 366 (400-1⅛)	NA

SC-1, 14 MAY 2026 to 11 JUN 2026

SC-1, 14 MAY 2026 to 11 JUN 2026