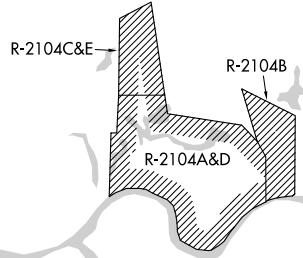
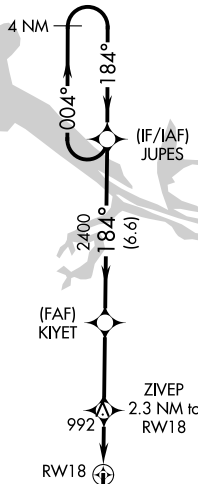
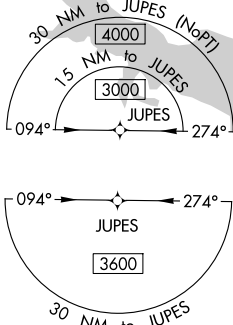


APP CRS	Rwyt Ldg	<b>3599</b>
<b>184°</b>	TDZE	<b>629</b>
	Apt Elev	<b>629</b>

# RNAV (GPS) RWY 18

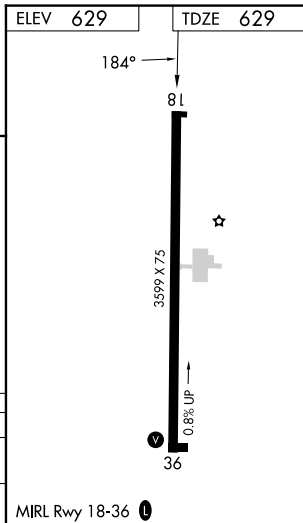
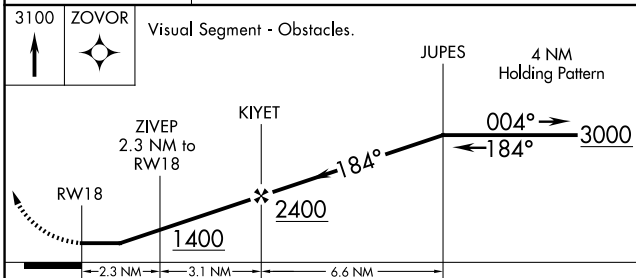
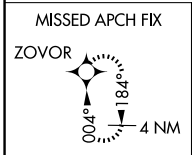
HARTSELLE/MORGAN COUNTY RGNL (5M $\emptyset$ )

RNP APCH.		UNICOM <b>122.8</b> (CTAF) $\emptyset$
<p><math>\nabla</math> Procedure NA at night. Rwy 18 helicopter visibility reduction below 1 SM NA.  <math>\triangle</math> NA Use Huntsville Intl-Carl T Jones Fld altimeter setting; when not received, use Cullman altimeter setting and increase all MDA 40 feet.</p>		MISSED APPROACH: Climb to 3100 direct ZOVOR and hold.
HSV ATIS <b>121.25</b>	HUNTSVILLE APP CON $\star$ <b>118.05 239.0</b>	



SE-4, 14 MAY 2026 to 11 JUN 2026

SE-4, 14 MAY 2026 to 11 JUN 2026



CATEGORY	A	B	C	D
LNVA MDA	1280-1	651 (700-1)	1280-1 $\frac{7}{8}$ 651 (700-1 $\frac{7}{8}$ )	NA
CIRCLING	1280-1	651 (700-1)	1520-2 $\frac{3}{4}$ 891 (900-2 $\frac{3}{4}$ )	NA