

# RNAV (GPS) RWY 30

CALDWELL EXEC (EUL)

WAAS CH <b>73007</b> <b>W30A</b>	APP CRS <b>299°</b>	Rwy ldg TDZE Apt Elev	<b>5500</b> <b>2432</b> <b>2432</b>
--	------------------------	-----------------------------	---

RNP APCH.

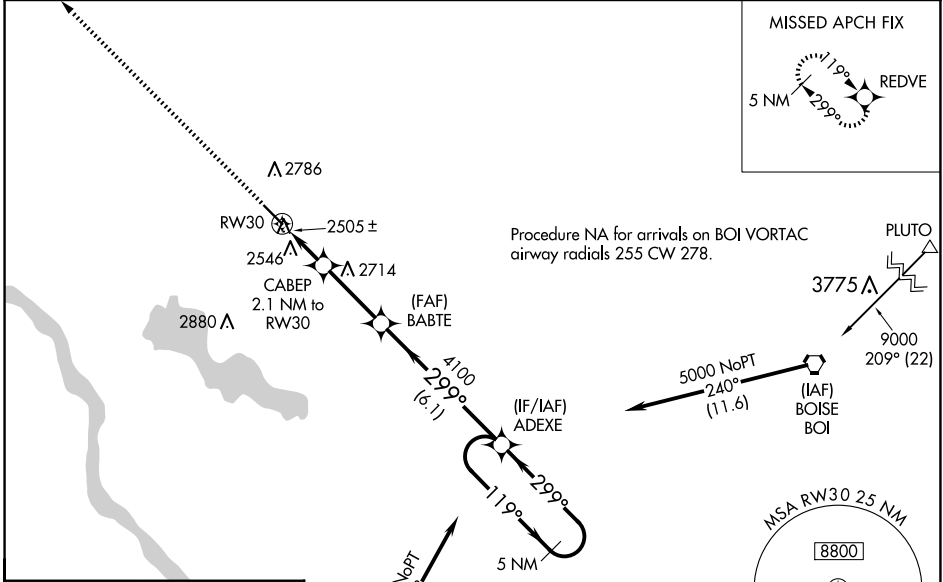
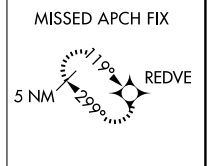
**⚠** Rwy 30 helicopter visibility reduction below 3/4 SM NA. Baro-VNAV NA when using Boise altimeter setting. For uncompensated Baro-VNAV systems, LNAV/VNAV NA below -19°C or above 44°C. When local altimeter setting not received, use Boise altimeter setting and increase all DA/MDA 120 feet and all visibilities 1/2 mile.

MISSED APPROACH: Climb to 5000 direct REDVE and hold.

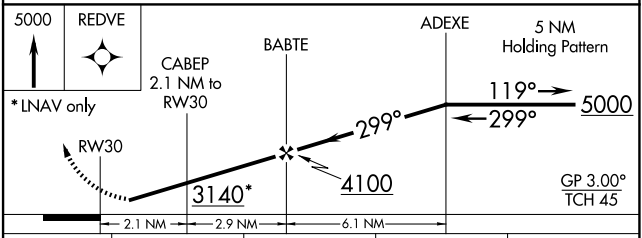
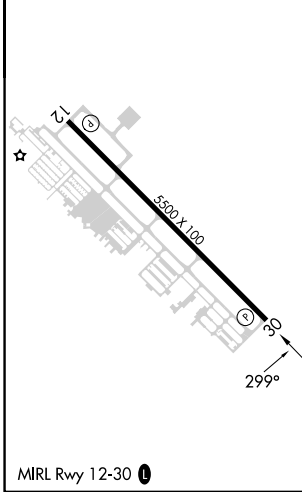
AWOS-3PT  
**135.075**

BIG SKY APP CON  
**119.6 269.4**

UNICOM  
**123.0 (CTAF)**



ELEV 2432	TDZE 2432
-----------	-----------



CATEGORY	A	B	C	D
LPV DA	2687-1 255 (300-1)			
LNAV/VNAV DA	2822-1 1/4 390 (400-1 1/4)			
LNAV MDA	2880-1	448 (500-1)	2880-1 3/8 448 (500-1 3/8)	2880-1 1/2 448 (500-1 1/2)

NW-1, 14 MAY 2026 to 11 JUN 2026

NW-1, 14 MAY 2026 to 11 JUN 2026