

WAAS CH 70618 W13A	APP CRS 127°	Rwy Idg TDZE Apt Elev	4201 1402 1402
--	------------------------	-----------------------------	---

RNAV (GPS) RWY 13

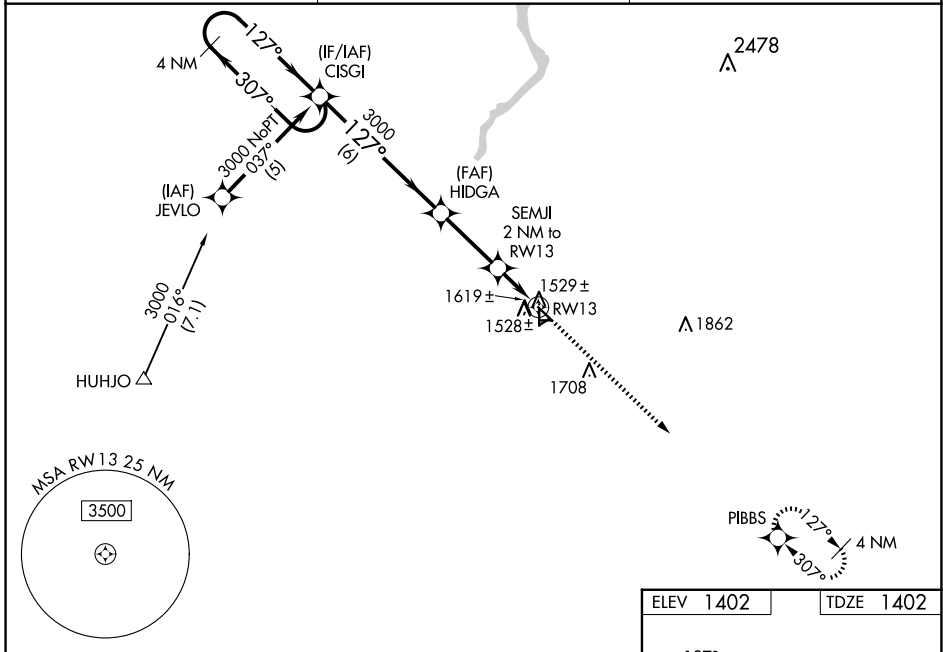
BARNES COUNTY MUNI (BAC)

RNP APCH - GPS.

⚠ Baro-VNAV NA when using Jamestown altimeter setting. For uncompensated Baro-VNAV systems, LNAV/VNAV NA below -17°C or above 54°C. When local altimeter setting not received, use Jamestown altimeter setting: increase LPV DA to 1729 feet and all visibilities ¼ SM; increase LNAV/VNAV DA to 1966 and all visibilities ¼ SM; increase all MDA 80 feet and visibility LNAV Cat C and Circling Cat C ¼ SM. Circling NA to Rwy 5, 8, 17, 23, 26 and 35. Rwy 13 helicopter visibility reduction below ¾ SM NA.

⚠ MISSED APPROACH: Climb to 3100 direct PIBBS and hold.

AWOS-3 118.725	MINNEAPOLIS CENTER 124.2 270.3	UNICOM 122.8 (CTAF)
--------------------------	--	-------------------------------



4 NM Holding Pattern

VGSI and RNAV glidepath not coincident (VGSI Angle 3.00/TCH 28).

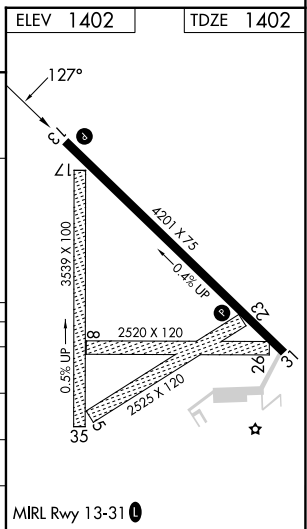
3100 PIBBS

*LNAV only

*2040

GP 3.00° TCH 40

CATEGORY	A	B	C	D
LPV DA	1652-1	250 (300-1)		NA
LNAV/VNAV DA	1889-1¾	487 (500-1¾)		NA
LNAV MDA	1880-1	478 (500-1)	1880-1¼ 478 (500-1¼)	NA
CIRCLING	1920-1 518 (600-1)	2000-1 598 (600-1)	2020-1¾ 618 (700-1¾)	NA



NC-1, 14 MAY 2026 to 11 JUN 2026

NC-1, 14 MAY 2026 to 11 JUN 2026