

APP CRS	Rwy Idg	2998
239°	TDZE	5
	Apt Elev	5

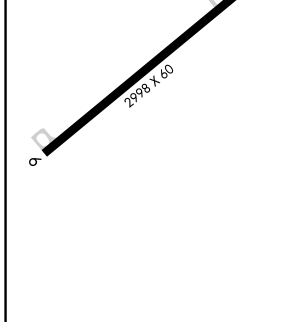
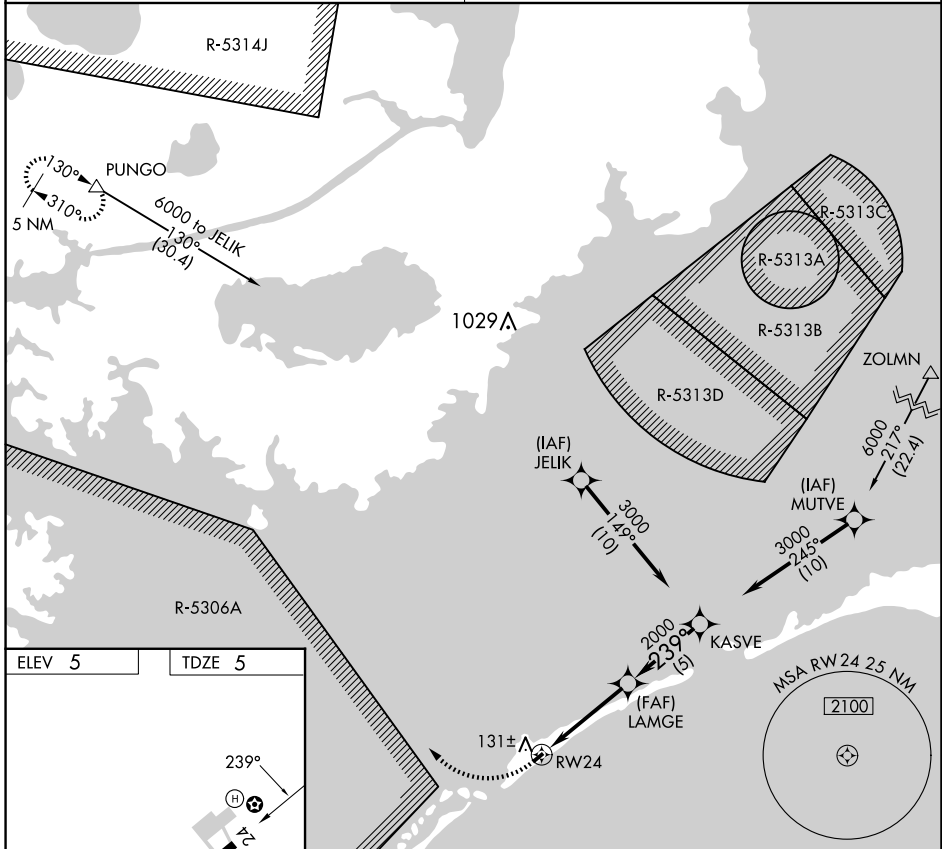
RNAV (GPS) RWY 24

OCRACOKE ISLAND (W95)

▲ NA Procedure NA at night. Use Hatteras altimeter setting, when not received procedure NA. DME/DME RNP-0.3 NA. Helicopter visibility reduction below 1 SM NA.

MISSED APPROACH: Climbing right turn to 6000 direct PUNGO WP and hold.

CHERRY POINT APP CON	CTAF
119.75 360.775	122.9



6000	PUNGO	▲		
CATEGORY	A	B	C	D
LNAV MDA	500-1	495 (500-1)	NA	
CIRCLING	560-1	555 (600-1)	NA	

SE-2, 14 MAY 2026 to 11 JUN 2026

SE-2, 14 MAY 2026 to 11 JUN 2026